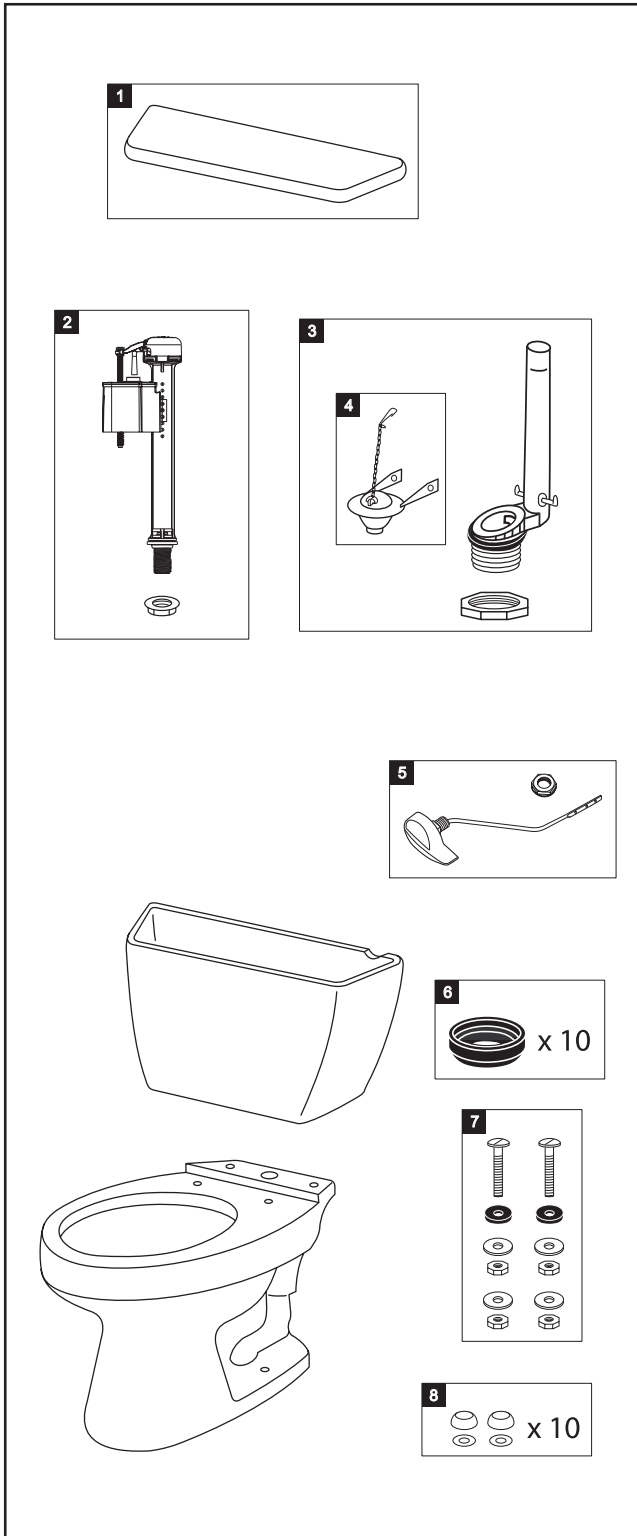


1.6 GPF Toilet, Elongated, Gravity, 12" Rough-In



Item	Part	Description
1	TCU706CR#01	Tank Lid w/ Velcro Tape - Cotton White
	TCU706CR#03	Tank Lid w/ Velcro Tape - Bone
	TCU706CR#04	Tank Lid w/ Velcro Tape - Grey
	TCU706CR#11	Tank Lid w/ Velcro Tape - Colonial White
	TCU706CR#12	Tank Lid w/ Velcro Tape - Sedona Beige
	TCU706CR#51	Tank Lid w/ Velcro Tape - Ebony
2	TSU30A	Fill Valve
3	THU255-A	Flush Valve
4	THU257	Flapper w/ Chain
5	THU061#01	Trip Lever - Cotton White
	THU061#03	Trip Lever - Bone
	THU061#04	Trip Lever - Grey
	THU061#11	Trip Lever - Colonial White
	THU061#12	Trip Lever - Sedona Beige
	THU061#51	Trip Lever - Ebony
	THU061#CP	Trip Lever - Chrome Plated
	THU061#PB	Trip Lever - LifeKoat™ Polished Brass
6	THU102	2" Tank to Bowl Gaskets (for 10 toilets)
7	TSU01D	Tank Mounting Kit
8	THU098#01	Bolt Cap Sets (for 10 toilets) for #01 & #11
	THU098#03	Bolt Cap Sets (for 10 toilets) for #03 & #12
	THU098#04	Bolt Cap Sets (for 10 toilets) - Grey
	THU098#51	Bolt Cap Sets (for 10 toilets) - Ebony

Notes

TSU14A does not require a refill tube.

Product Number Explanations

Two-Piece Toilet	Tank	Bowl
(CST) Gravity Type Toilet	(ST) Tank	(C) Bowl
(716) Model	(706) Model	(716) Model