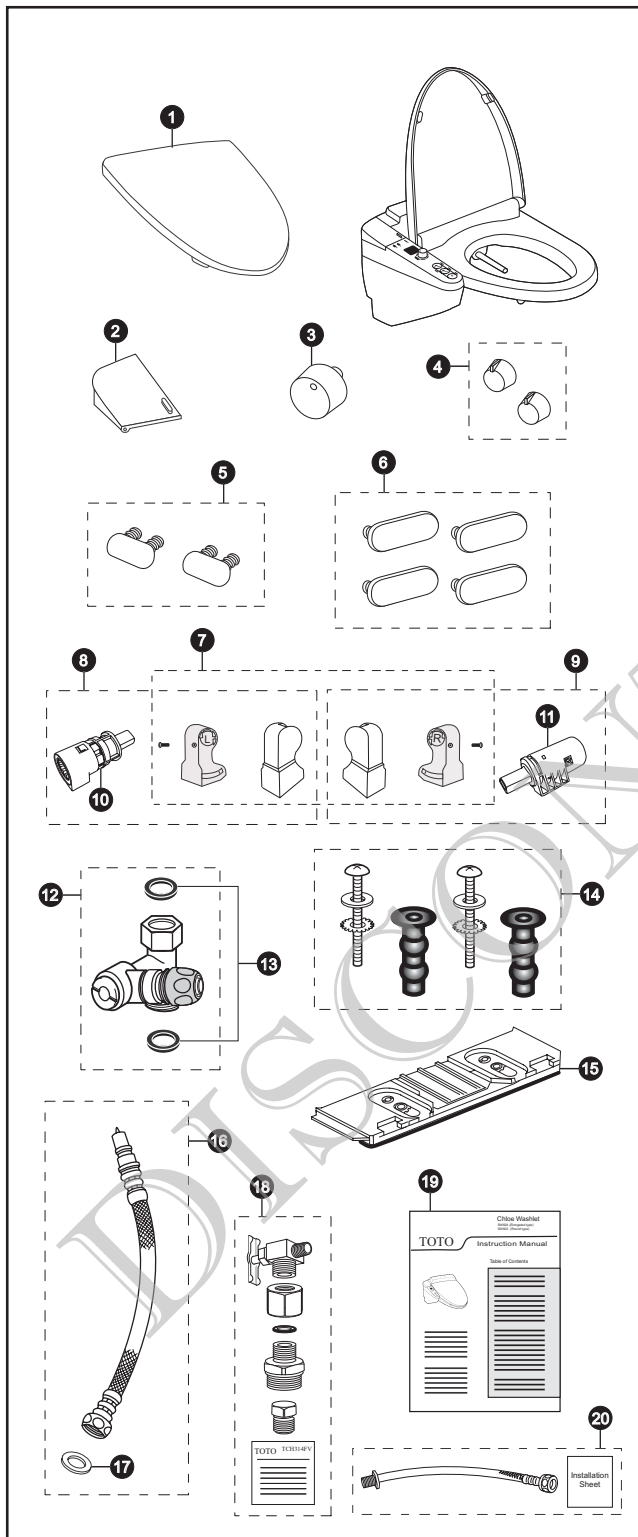


SW824 (TCF251UR)

SW824
TCF251UR

Washlet® C100™ Elongated Seat



Item	Part	Description
1	THU575#01 THU575#11 THU575#12	Lid Assembly - Elongated - Cotton White Lid Assembly - Elongated - Colonial White Lid Assembly - Elongated - Sedona Beige
2	THU579#01 THU579#11 THU579#12	Control Panel Cover - Cotton White Control Panel Cover - Colonial White Control Panel Cover - Sedona Beige
3	THU580	Water Pressure Control Knob
4	THU581	Water & Seat Temp Control Knobs (2 pieces)
5	THU576	Lid Bumpers (2 pieces)
6	THU585	Seat Bumpers (4 pieces)
7	THU639	Hinge Support Assembly - Left & Right
8	THU584	Obsolete. Hinge Assembly - Left
9	THU583	Obsolete. Hinge Assembly - Right
10	THU641	Hinge Unit - Left - Elongated Lid
11	THU640	Hinge Unit - Right - Elongated Seat
12	THU661	Junction Valve
13	9BU9155	Rubber Washers - Junction Valve (2 pieces)
14	THU599	Mounting Hardware
15	THU635	Mounting Plate
16	THU660	Connection Hose
17	9BU9152	Fiber Washer (1 piece)
18	TCH314FV	Flushometer Adapter Kit
19	THU564	Owner's Manual ('02.12)
20	THU9090	Hose Extension Kit (for Aquia™ CST414M and Pacifica™ CST804S)

Notes

C100™ was previously known as the Chloe™.

Flushometer Adapter Kit TCH314FV requires Connection Hose THU588 (see previous page). A junction valve will not be used with this kit.

Junction Valve THU661 can be converted back to THU587 (previous page) if needed by removing the gray quick connector.

Mounting Plate THU635 has locking clips that are 7-11/16" (195mm) apart, which makes this plate not interchangeable with THU600 (previous page). Mounting Hardware THU599 is required.

Fiber Washer 9BU9152 replaces original rubber washer design.

TOTO Sales can order 0GU504 template on TOTO Partners.com
To use template, the existing toilet seat must be removed from the toilet bowl.

Product Number Explanations

Washlet®
(SW) Washlet®
(824) Model