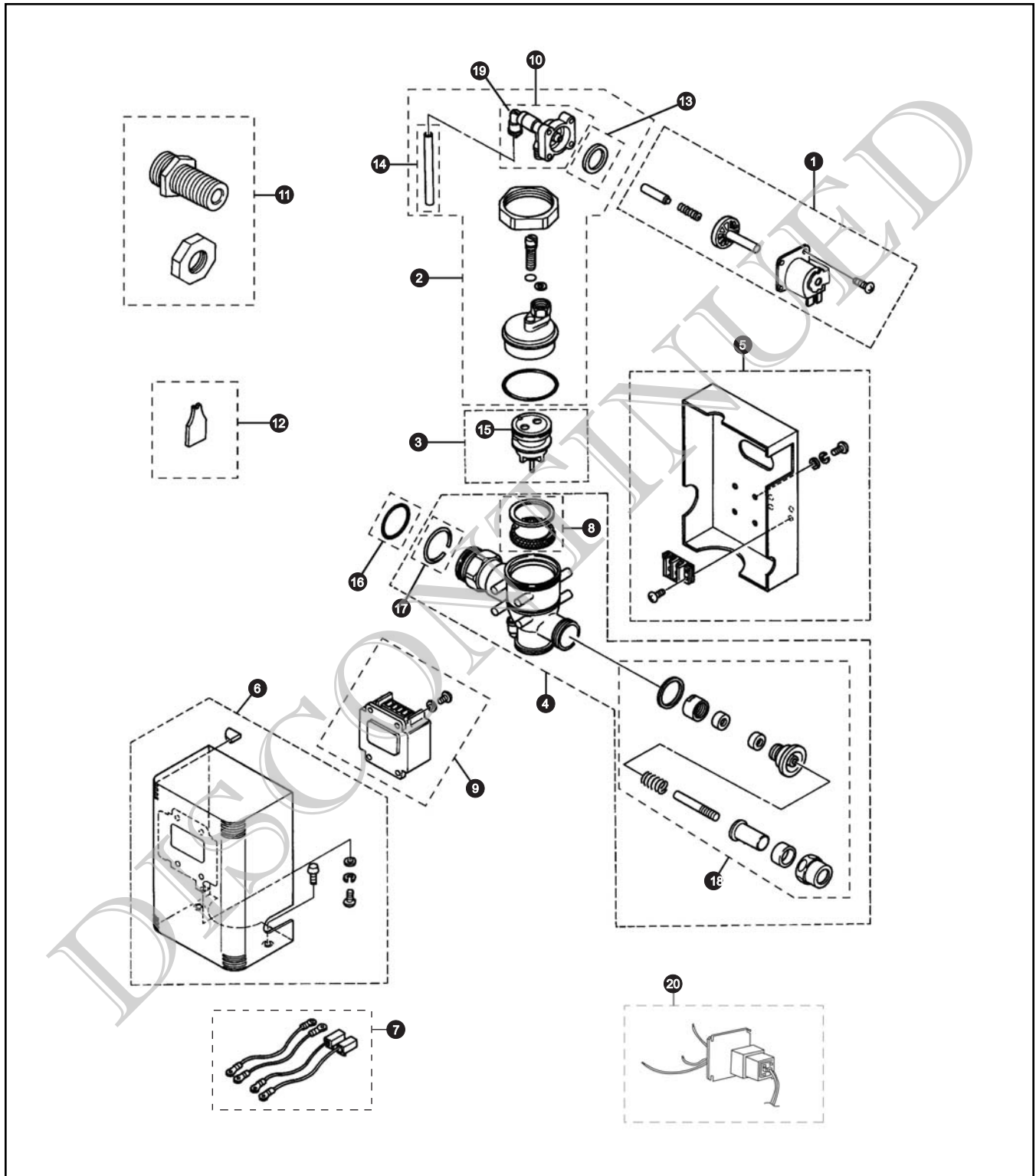


TET1ALS Series

TET1ALS
TET1ALS-32

Sensor Toilet Flush Valve, Exposed AC Powered (24V, AC)



TET1ALS Series

TET1ALS
TET1ALS-32

Sensor Toilet Flush Valve, Exposed AC Powered (24V, AC)

Item	Part Number	Description	Item	Part Number	Description
1	TH559EDV165	Solenoid for AC Sensors	Vacuum Breaker Sets		
2	TH559EDV198	Valve Cap Set for AC Sensors	VB9CP-32		Exposed - Top Spud (1-1/2" Outlet)
3	TH559EDV159	Piston Assembly for AC Toilet Series	Note: For additional information, refer to the individual vacuum breaker parts sheets.		
4	TH559EDV155	Valve Body			
5	TH559EDV231	Rear Cover Set - Left Supply			
6	TH559EDV204	Front Cover Set - Left Supply			
7	TH559EDV157	Wire Kit			
8	TH559EDV54B	Seal Washer Set			
9	TH559EDV232	Sensor Unit (AC Type) (Use 580246)			
10	TH559EDV164	Solenoid Valve Body for AC Sensors			
11	TH559EDV211	Wall Fitting Kit			
12	TH559EDV207	Spanner Wrench Tools (10 Pieces)			
13	TH559EDV212	Packing (10 Pieces)			
14	TH559EDV199	Tubes (10 Pieces)			
15	TH559EDV200	U-Packing (For Piston) (10 Pieces)			
16	TH559EDV190	O-Rings (Tail Piece) (10 Pieces)			
17	TH559EDV189	Nut Stoppers (10 Pieces)			
18	TH559EDV210	Push Button Repair Kit			
19	18217T1M	Elbow			
20	TEF61RSV17	Transformer (120V AC to 24V AC 10W) (Obsolete)			
<p>Note: Transformer TEF61RSV17 can be replaced with a Class II UL transformer with primary (120V AC, 60Hz) and secondary (24V AC, 1.8A min.) using only UL Class II No. 18 wires on the secondary side. A maximum of 10 flush valves can be run on one transformer.</p> <p>Order Seal Washer Set TH559EDV54B until depleted, then order TH321S.</p> <p>Order Nut Stoppers TH559EDV189 until depleted, then order TH305SV105.</p> <p>Order O-Rings TH559EDV190 until depleted, then order TH305SV106.</p> <p>Order U-Packing TH559EDV200 until depleted, then order TH305SV103.</p> <p>Sensor Unit TH559EDV232 is temporarily replaced by 580246, until further notice.</p>					

Product Number Explanations

Flush Valve

(T) Fitting
(E) Electronic
(T) Toilet 1.6
(1) Exposed
(A) AC Transformer
(L) Left Side Supply
(S) Stainless Finish
(3) 1-1/2" Outlet
(2) Top Spud