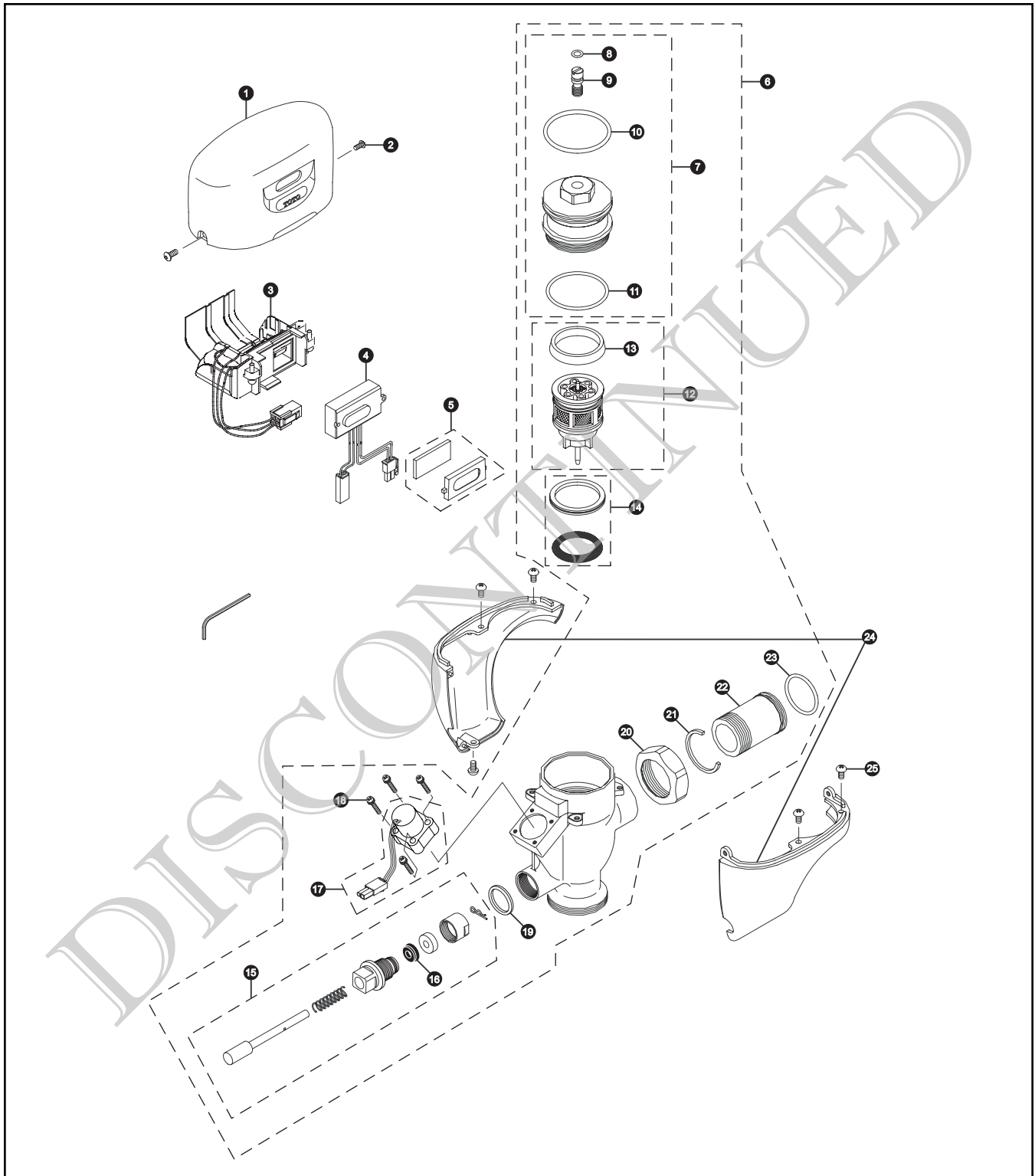


# TET1DNCS Series

TET1DNCS  
TET1DNCS-32

**Sensor Toilet Flush Valve**  
**Exposed - 1.6 GPF**  
**Battery Powered (6V DC)**



# TET1DNCS Series

TET1DNCS  
TET1DNCS-32

## Sensor Toilet Flush Valve Exposed - 1.6 GPF Battery Powered (6V DC)

Item	Part Number	Description	Item	Part Number	Description
1	TH559EDV311	Top Cover DC Type	<b>Vacuum Breaker Sets</b>		
2	TH559EDV529	Hex Socket Pan Head Cap Screw Set	VB9CP-32		Exposed - Top Spud (1-1/2" Outlet)
3	TH559EDV308	Battery Case - DC	<b>Note:</b> For additional information, refer to the individual vacuum breaker parts sheets.		
4	TH559EDV530	Sensor Controller (DC Toilet)			
5	TH559EDV317	Glass & Packing Set			
6	TH559EDV522	Valve Body Assembly			
7	TH559EDV526	Valve Cap Assy			
8	TH305SV111	O-Rings (Cap Screw) (10 Pieces)			
9	TH559EDV528	Adjustment Screw Set			
10	TH559EDV302	O-Ring (Valve Cap)			
11	TH305SV112	O-Rings (Valve Guide) (10 Pieces)			
12	TH323V105	Piston Valve Assy			
13	TH305SV103	U-Packing (For Piston) (10 Pieces)			
14	TH321	Seal Washer Kit			
15	TH559EDV525	Push Button Assy			
16	TH302RV100	Gaskets (U-Packing) (10 Pieces)			
17	TH559EDV300	Solenoid Unit & Diaphragm Assembly			
18	TH559EDV301	Double Sems Screws M3 (4 pieces)			
19	TH305SV124	O-Ring Set (Push Rod)			
20	TH305SV113	Nut			
21	TH305SV105	Locking Rings (10 Pieces)			
22	TH305SV114	Tail Piece			
23	TH305SV106	O-Rings (Tail Piece) (10 Pieces)			
24	TH559EDV320	Lower Toilet Cover Set			
25	TH559EDV325	Screw Set 8-32 UNC (10 Pieces)			

**Note:** Allen Wrench 3/32" is for reference purposes only.

### Product Number Explanations

**Flush Valve**  
 (T) Fitting  
 (E) Electronic  
 (T) Toilet 1.6  
 (1) Exposed  
 (D) DC Battery  
 (N) Neutral Rough-In  
 (C) Chrome Finish  
 (S) Revision  
 (3) 1-1/2" Outlet  
 (2) Top Spud