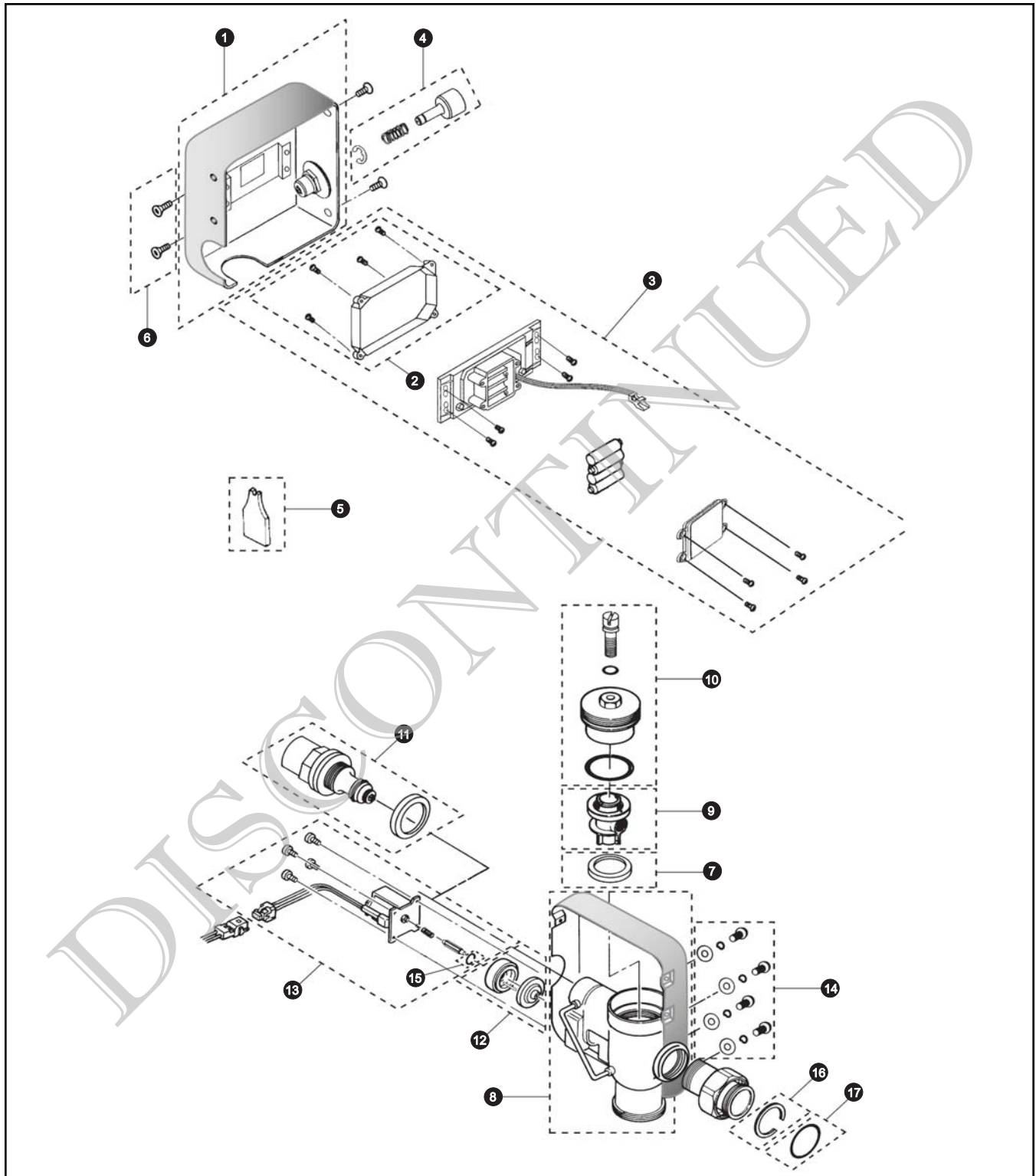


TET1DRS
TEF62RV4

**Automatic Toilet Flush Valve
Battery Powered (6V, DC)**



TET1DRS
TEF62RV4

Automatic Toilet Flush Valve Battery Powered (6V, DC)

Item	Part Number	Description	Item	Part Number	Description			
1	71324T12RHL	Front Cover, Right (Stainless)	Vacuum Breaker Sets					
2	TH559EDV21	Sensor Cover Set	VB9CP-32		Exposed - Top Spud (1-1/2" Outlet)			
3	58074T4R	Sensor Unit ("AA" Battery)	Note: For additional information, refer to the individual vacuum breaker parts sheets.					
4	TH559EDV47	Outside Manual Button Assembly						
5	TH559EDV207	Spanner Wrench Tools (10 Pieces)						
6	TH559EDV209	Vandal Proof Screws (S) (10 Pieces)						
7	TH559EDV54B	Seal Washer Set						
8	71173T51SHL	Rear Cover, Right (Stainless)						
9	TH559EDV52	Piston Assembly						
10	TH559EDV243	Valve Cap Set						
11	TH559EDV46	Inside Manual Button Assembly						
12	TH653-1	Self-Cleaning Diaphragm & Cap						
13	TH559EDV196	Solenoid ("AA" Battery)						
14	TH559EDV191	Screws (10 Pieces)						
15	TH559EDV192	Solenoid O-Ring Set (10 Pieces)						
16	TH559EDV189	Nut Stoppers (10 Pieces)						
17	TH559EDV190	O-Rings (Tail Piece) (10 Pieces)						
Note: Sensor Unit 58074T4R does not include "AA" Batteries.								
Order Nut Stoppers TH559EDV189 until depleted, then order Locking Rings TH305SV105.								
Order O-Rings TH559EDV190 until depleted, then order O-Rings (Tail Piece) TH305SV106.								
Order Seal Washer Set TH559EDV54B until depleted, then order Seat Packing Set TH321S.								
TEF62RV4 is the TOTO Ltd. Number for TET1DRS.								

Product Number Explanations

Flush Valve

- (T) Fitting
- (E) Electronic
- (T) Toilet 1.6
- (1) Exposed
- (D) DC Battery
- (R) Right Side Supply
- (S) Stainless Finish