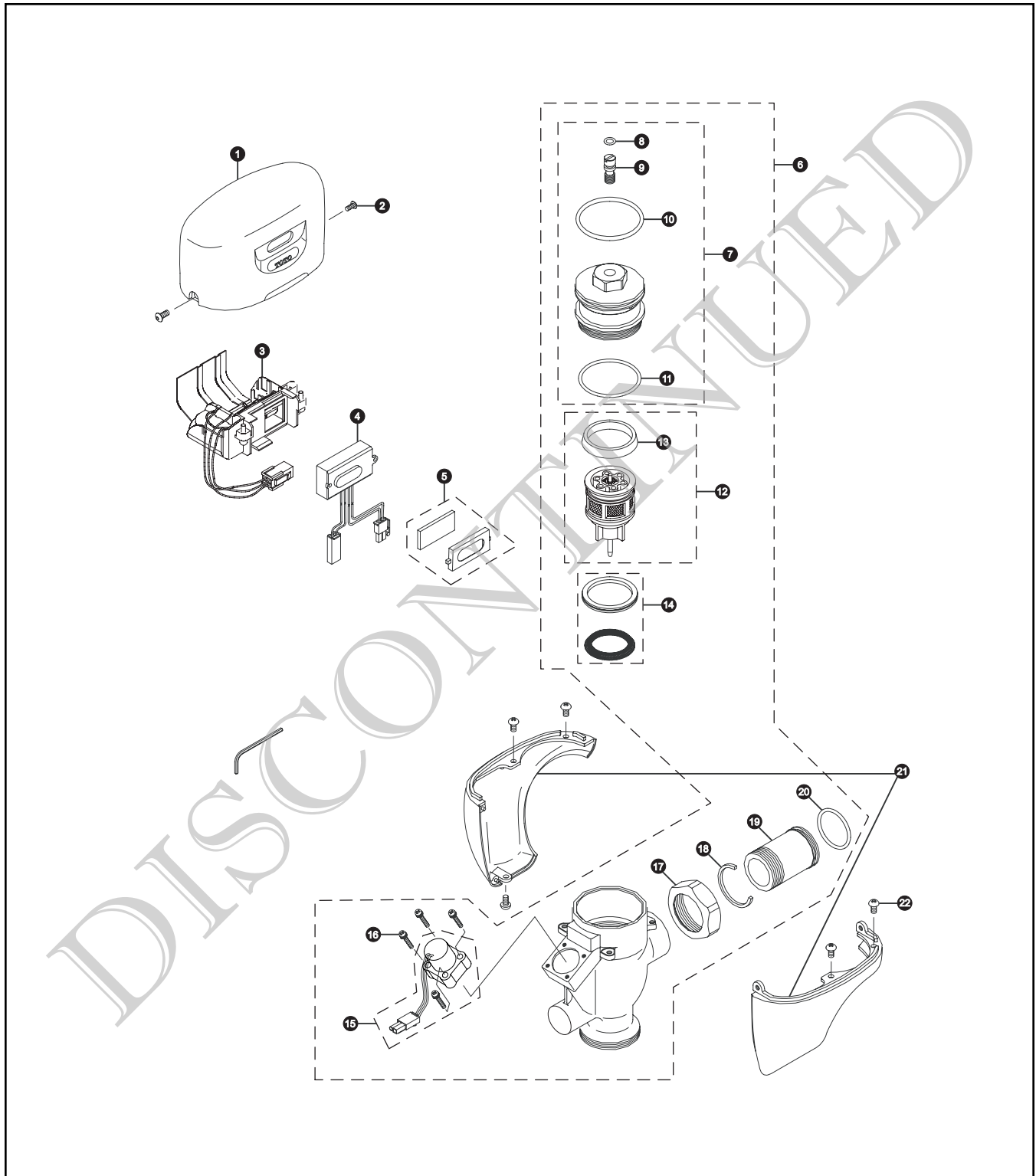


# TEU1DNCS Series

TEU1DNCS  
TEU1DNCS-12  
TEU1DNCS-22

**Sensor Urinal Flush Valve, Exposed - 1.0 GPF  
Battery Powered (6V, DC)**



# TEU1DNCS Series

TEU1DNCS  
TEU1DNCS-12  
TEU1DNCS-22

## Sensor Urinal Flush Valve, Exposed - 1.0 GPF Battery Powered (6V, DC)

Item	Part Number	Description	Item	Part Number	Description
1	TH559EDV311	Top Cover DC Type	<b>Vacuum Breaker Sets</b>		
2	TH559EDV529	Hex Socket Pan Head Cap Screw Set	VB9CP-12	Exposed - Top Spud (3/4" Outlet)	1 \$54.00
3	TH559EDV308	Battery Case - DC	VB9CP-22	Exposed - Top Spud (1-1/4" Outlet)	1 \$54.00
4	TH559EDV314	Sensor Controller - DC Urinal	<b>Note:</b> For additional information, refer to the individual vacuum breaker parts sheets.		
5	TH559EDV317	Glass & Packing Set	TOTO urinals UT104, UT370 and UT447 have 3/4" Top Spud Inlets.		
6	TH559EDV524	Valve Body Assy			
7	TH559EDV527	Valve Cap Assy			
8	TH305SV111	O-Rings (Cap Screw) (10 Pieces)			
9	TH559EDV528	Adjustment Screw Set			
10	TH559EDV302	O-Ring (Valve Cap)			
11	TH305SV112	O-Rings (Valve Guide) (10 Pieces)			
12	TH559EDV307	Piston Assembly (1.0 GPF & 3.5 GPF)			
13	TH305SV103	U-Packing (For Piston) (10 Pieces)			
14	TH305SV106	O-Rings (Tail Piece) (10 Pieces)			
14	TH321	Seal Washer Kit			
15	TH559EDV300	Solenoid Unit & Diaphragm Assembly			
16	TH559EDV301	Double Sems Screws M3 (4 pieces)			
17	TH305SV113	Nut			
18	TH305SV105	Locking Rings (10 Pieces)			
19	TH305SV114	Tail Piece			
21	TH559EDV321	Lower Urinal Cover Set			
22	TH559EDV325	Screw Set 8-32 UNC (10 Pieces)			
<b>Note:</b> Allen Wrench 3/32" is for reference purposes only.					

### Product Number Explanations

#### Flush Valve

(T) Fitting  
(E) Electronic  
(U) Urinal 1.0  
(1) Exposed  
(D) DC Battery  
(N) Neutral Rough-In  
(C) Chrome Finish  
(S) Revision  
(1) 3/4" Outlet  
(2) Top Spud

(T) Fitting  
(E) Electronic  
(U) Urinal 1.0  
(1) Exposed  
(D) DC Battery  
(N) Neutral Rough-In  
(C) Chrome Finish  
(S) Revision  
(2) 1-1/4" Outlet  
(2) Top Spud