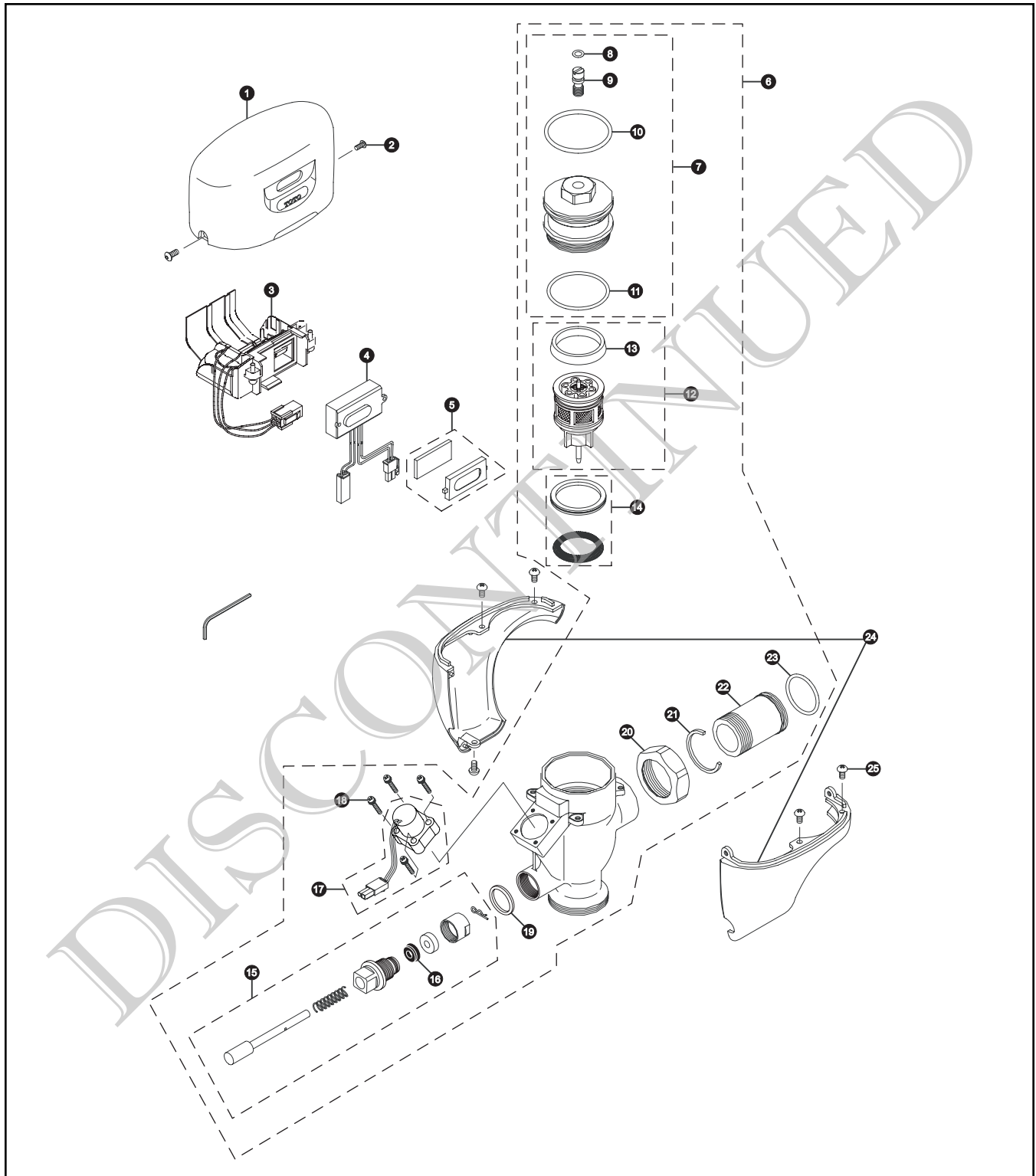


TEW1DNCS Series

TEW1DNCS
TEW1DNCS-32

**Sensor Toilet Flush Valve
Exposed - 3.5 GPF
Battery Powered (6V, DC)**



TEW1DNCS Series

TEW1DNCS
TEW1DNCS-32

Sensor Toilet Flush Valve Exposed - 3.5 GPF Battery Powered (6V, DC)

Item	Part Number	Description	Item	Part Number	Description			
1	TH559EDV311	Top Cover DC Type	Vacuum Breaker Sets					
2	TH559EDV529	Hex Socket Pan Head Cap Screw Set		VB9CP-32	Exposed - Top Spud (1-1/2" Outlet)	1	\$54.00	
3	TH559EDV308	Battery Case - DC	Note: For additional information, refer to the individual vacuum breaker parts sheets.					
4	TH559EDV530	Sensor Controller (DC Toilet)						
5	TH559EDV317	Glass & Packing Set						
6	TH559EDV523	Valve Body Assy						
7	TH559EDV526	Valve Cap Assy						
8	TH305SV111	O-Rings (Cap Screw) (10 Pieces)						
9	TH559EDV528	Adjustment Screw Set						
10	TH559EDV302	O-Ring (Valve Cap)						
11	TH305SV112	O-Rings (Valve Guide) (10 Pieces)						
12	TH323V106	Piston Valve Assy						
13	TH305SV103	U-Packing (For Piston) (10 Pieces)						
14	TH321	Seal Washer Kit						
15	TH559EDV525	Push Button Assy						
16	TH302RV100	Gaskets (U-Packing) (10 Pieces)						
17	TH559EDV300	Solenoid Unit & Diaphragm Assembly						
18	TH559EDV301	Double Sems Screws M3 (4 pieces)						
19	TH305SV124	O-Ring Set (Push Rod)						
20	TH305SV113	Nut						
21	TH305SV105	Locking Rings (10 Pieces)						
22	TH305SV114	Tail Piece						
23	TH305SV106	O-Rings (Tail Piece) (10 Pieces)						
24	TH559EDV320	Lower Toilet Cover Set						
25	TH559EDV325	Screw Set 8-32 UNC (10 Pieces)						

Note: Allen Wrench 3/32" is for reference purposes only.

Product Number Explanations

Flush Valve

(T) Fitting
(E) Electronic
(W) Toilet 3.5
(1) Exposed
(D) DC Battery
(N) Neutral Rough-In
(C) Chrome Finish
(S) Revision
(3) 1-1/2" Outlet
(2) Top Spud