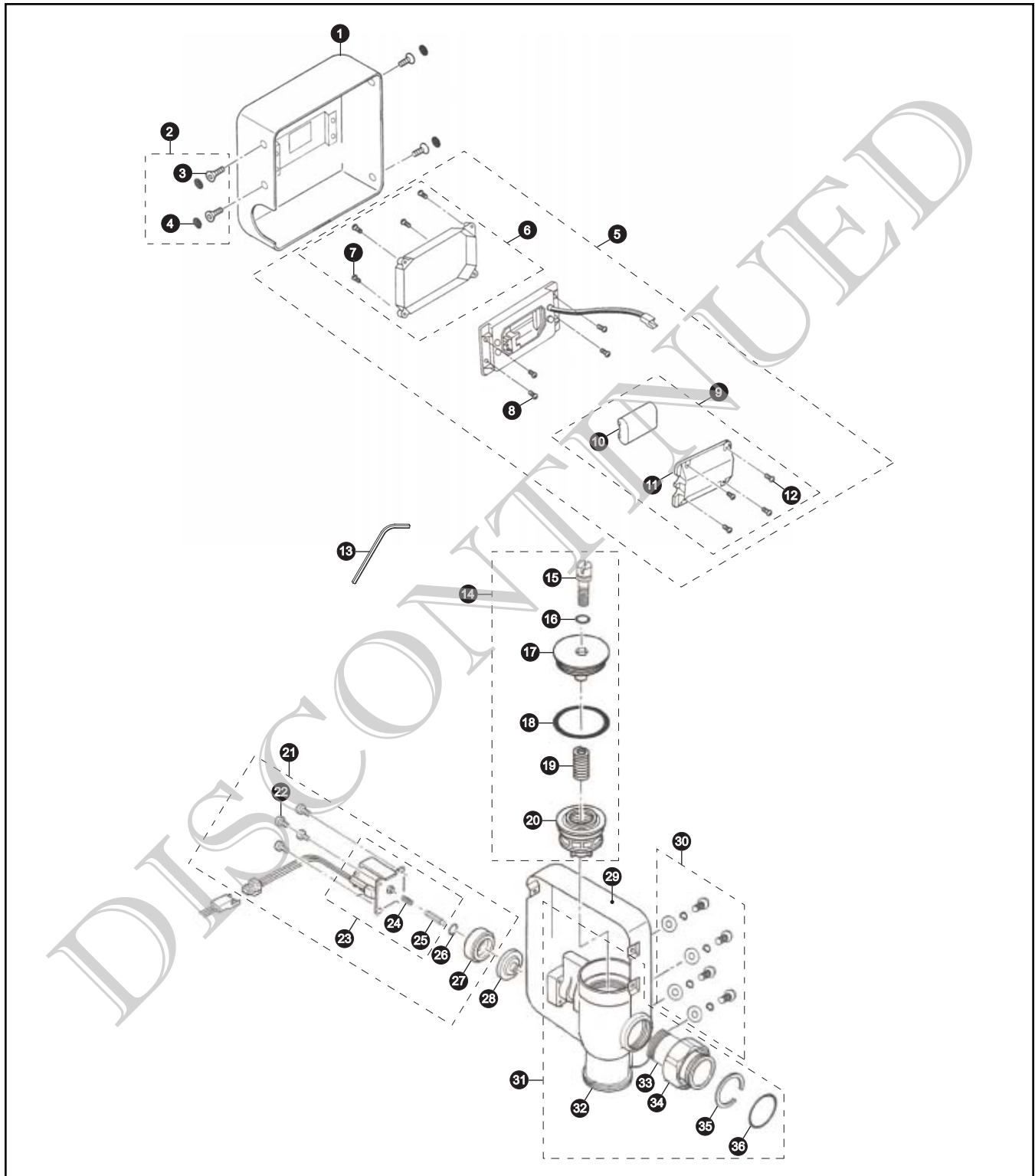


Automatic Urinal Flush Valve Battery Powered (Lithium)



CAUTION: Avoid placing infrared sensor near stainless steel walls, stainless steel handrails, mirrors, or other reflective surfaces. Sensor detection will become intermittent.

TEA90DV18

Automatic Urinal Flush Valve Battery Powered (Lithium)

Item	Part Number	Description	Item	Part Number	Description
1	TH559EDV18	Front Cover (Obsolete)	35	TH559EDV189	Nut Stoppers (10 Pieces)
2	TH559EDV26	Screw Sets (4 pieces) (Obsolete)	36	TH559EDV28	O-Ring (Obsolete)
3	04021T2	Screw Concealers (10 Pieces) (Obsolete)	Note: Order Nut Stoppers TH559EDV189 until depleted, then order TH305SV105.		
4	61153RT18	Vandal Proof Screw (Stainless) (Obsolete)	Sensor Unit TH559EDV20 does not include Lithium Battery 57071.		
5	TH559EDV20	Sensor Unit (for Lithium Battery) (Battery Not Included)	Vacuum Breaker Sets		
6	TH559EDV21	Sensor Cover Set	VB9CP-12	Top Spud (3/4" Outlet)	
7	61218	Screw (Sensor Cover) (Obsolete)	VB9CP-22	Top Spud (1-1/4" Outlet)	
8	611221	Screw (Sensor & Solenoid) (Obsolete)	Note: For additional information, refer to the individual vacuum breaker parts sheets.		
9	TH559EDV27	Battery Cover Set (Obsolete)	TOTO urinals UT104, UT370 and UT447 have 3/4" Top Spud Inlets.		
10	57071	Lithium Battery (2CR5)			
11	84069NT4	Battery Cover (Obsolete)			
12	61135	Screw (Obsolete)			
13	85005T5	Allen Wrench (Obsolete)			
14	TH559EDV25	Piston Valve Assembly (Obsolete)			
15	62181	Adjustable Screw (Obsolete)			
16	91235HT4	O-Ring (Obsolete)			
17	17488T1	Valve Cap (Obsolete)			
18	91615SNT2	O-Ring (Obsolete)			
19	64147	Spring (Obsolete)			
20	TH559EDV50	Piston Assembly			
21	TH559EDV22	Solenoid Assembly (Lithium Battery)			
22	611221	Screw (Sensor & Solenoid) (Obsolete)			
23	TH559EDV51	Solenoid Set (includes Spring & Plunger) (Obsolete)			
24	64162	Spring (Obsolete)			
25	57064	Plunger (Obsolete)			
26	93062H	O-Ring (Diaphragm Cap) (Obsolete)			
27	17233NT3R	Diaphragm Cap (Obsolete)			
28	TH559EDV23	Diaphragm (Obsolete)			
29	TH559EDV19	Rear Cover (Obsolete)			
30	TH559EDV26	Screw Sets (4 pieces) (Obsolete)			
31	TH559EDV24	Valve Unit (Obsolete)			
32	11950T3R	Main Body (Obsolete)			
33	14452T34R	Tail Piece (Obsolete)			
34	22052T8	Inlet Nut (Obsolete)			

Product Number Explanations

Flush Valve

(T) Fitting
(E) Electronic
(A)
(90)
(D) DC Battery
(V18) Version