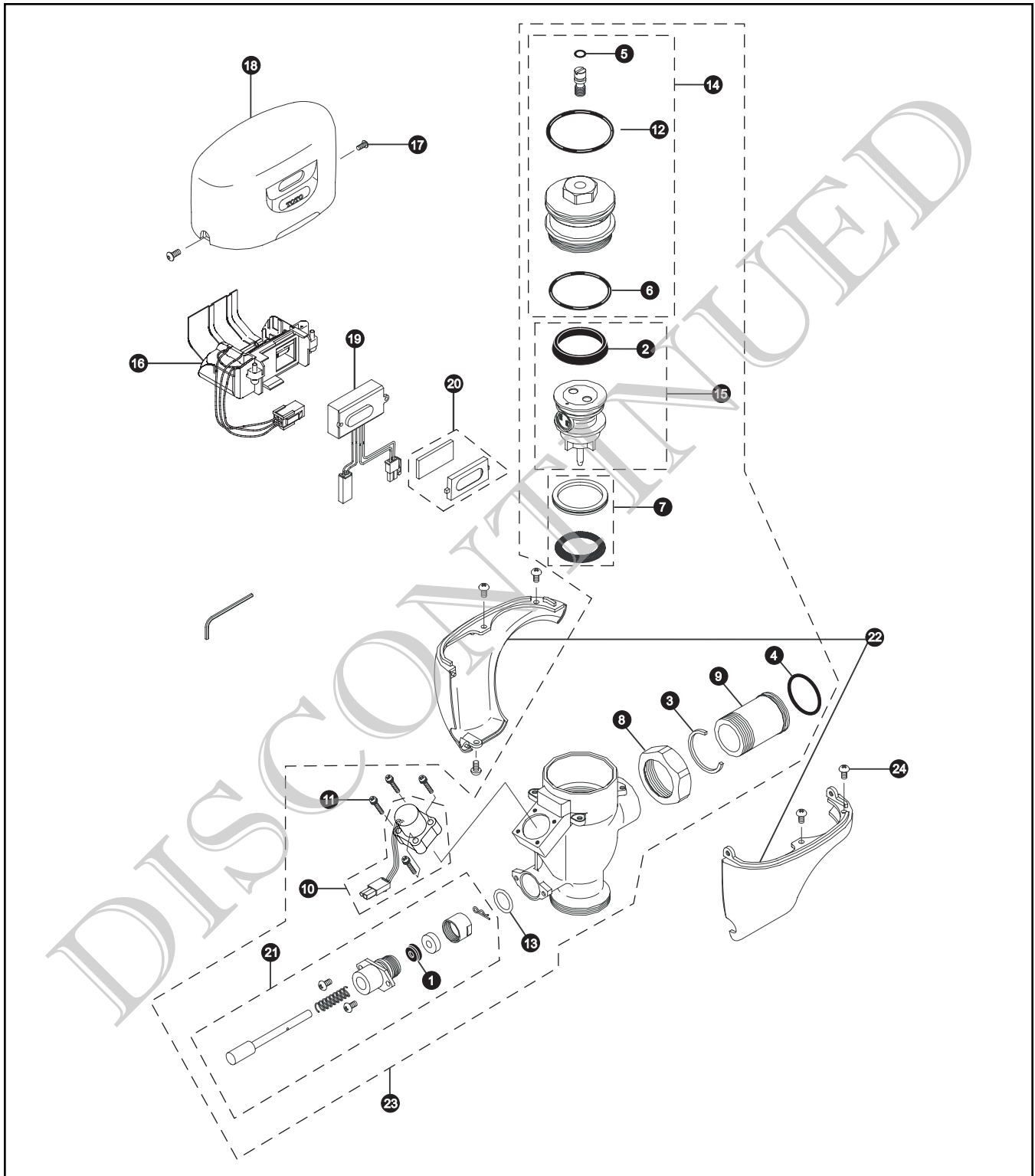


## TET1DNCR Series

TET1DNCR  
TET1DNCR-32

**Sensor Toilet Flush Valve**  
**Exposed - 1.6 Gpf**  
**Battery Powered (6V DC)**



## TET1DNCR Series

TET1DNCR  
TET1DNCR-32

**Sensor Toilet Flush Valve  
Exposed - 1.6 Gpf  
Battery Powered (6V DC)**

Item	Part Number	Description	Item	Part Number	Description
1	TH302RV100	Gaskets (U-Packing) (10 Pieces)	<b>Vacuum Breaker Sets</b>		
2	TH305SV103	U-Packing (For Piston) (10 Pieces)	VB9CP-32		Exposed - Top Spud (1-1/2" Outlet)
3	TH305SV105	Locking Rings (10 Pieces)	<b>Note:</b> For additional information, refer to the individual vacuum breaker parts sheets.		
4	TH305SV106	O-Rings (Tail Piece) (10 Pieces)			
5	TH305SV111	O-Rings (Cap Screw) (10 Pieces)			
6	TH305SV112	O-Rings (Valve Guide) (10 Pieces)			
7	TH321	Seal Washer Kit			
8	TH305SV113	Nut			
9	TH305SV114	Tail Piece			
10	TH559EDV300	Solenoid Unit & Diaphragm Assembly			
11	TH559EDV301	Double Sems Screws M3 (4 pieces)			
12	TH559EDV302	O-Ring (Valve Cap)			
13	TH559EDV303	O-Ring (Push Rod)			
14	TH559EDV304	Valve Cap Assembly - Toilet			
15	TH559EDV306	Piston Assembly (1.6 GPF)			
16	TH559EDV308	Battery Case - DC			
17	TH559EDV310	Hex Socket Pan Head Cap Screw Set			
18	TH559EDV311	Top Cover DC Type			
19	TH559EDV313	Sensor Controller - DC Toilet			
20	TH559EDV317	Glass & Packing Set			
21	TH559EDV319	Push Rod Assembly			
22	TH559EDV320	Lower Toilet Cover Set			
23	TH559EDV322	Valve Body for Exposed (Toilet 1.6 GPF)			
24	TH559EDV325	Screw Set 8-32 UNC (10 Pieces)			

**Note:** Allen Wrench 3/32" is for reference purposes only.

### Product Number Explanations

**Flush Valve**

- (T) Fitting
- (E) Electronic
- (T) Toilet 1.6
- (1) Exposed
- (D) DC Battery
- (N) Neutral Rough-In
- (C) Chrome Finish
- (R) Revision
- (3) 1-1/2" Outlet
- (2) Top Spud