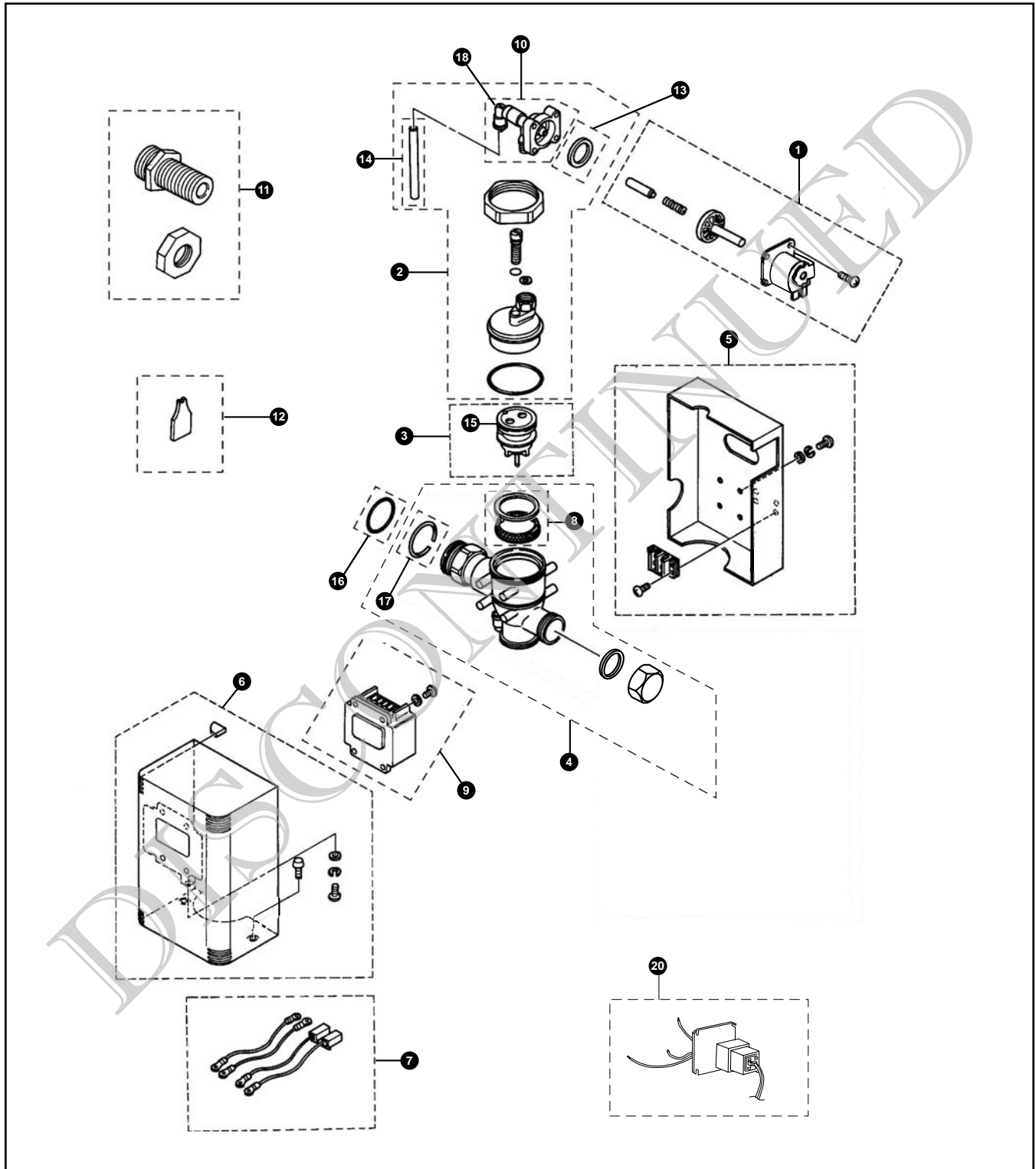


TEU1ALS
TEU1ALS-12
TEU1ALS-22

Sensor Urinal Flush Valve, Exposed
AC Powered (24V, AC)



TEU1ALS
TEU1ALS-12
TEU1ALS-22

Sensor Urinal Flush Valve, Exposed
AC Powered (24V, AC)

No.	Part Number	Description	Qty	Price	No.	Part Number	Description	Qty	Price
1	TH559EDV165	Solenoid for AC Sensors	1	\$48.00	Vacuum Breaker Sets				
2	TH559EDV198	Valve Cap Set for AC Sensors	1	\$117.00	VB9CP-12	Exposed - Top Spud (3/4" Outlet)	1	\$52.00	
3	TH559EDV158	Piston Assembly for AC Urinal Series	1	\$45.00	VB9CP-22	Exposed - Top Spud (1-1/4" Outlet)	1	\$52.00	
4	TH559EDV152	Valve Body	1	\$174.00	Note: For additional information, refer to the individual vacuum breaker parts sheets.				
5	TH559EDV231	Rear Cover Set - Left Supply	1	\$107.00	TOTO urinals UT104, UT370 and UT447 have 3/4" Top Spud Inlets.				
6	TH559EDV205	Front Cover Set - Left Supply	1	\$165.00					
7	TH559EDV157	Wire Kit	1	\$23.00					
8	TH559EDV54B	Seal Washer Set	1	\$14.00					
9	TH559EDV232	Sensor Unit (AC Type)	1	\$208.00					
10	TH559EDV164	Solenoid Valve Body for AC Sensors	1	\$68.00					
11	TH559EDV211	Wall Fitting Kit	1	\$15.00					
12	TH559EDV207	Spanner Wrench Tools	10	\$10.00					
13	TH559EDV212	Packing	10	\$7.00					
14	TH559EDV199	Tubes	10	\$26.00					
15	TH559EDV200	U-Packing (For Piston)	10	\$13.00					
16	TH559EDV190	O-Rings (Tail Piece)	10	\$9.00					
17	TH559EDV189	Nut Stoppers	10	\$14.00					
18	18217T1M	Elbow	1	\$14.00					
19	TEF61RSV17	Transformer (120V AC to 24V AC 10W)	1	Obsolete					

Note: TEF61RSV17 can be replaced with a Class II UL transformer with primary (120V AC, 60Hz) and secondary (24V AC, 1.8A min.) using only UL Class II No. 18 wires on the secondary side. A maximum of 10 flush valves can be run on one transformer.
Order TH559EDV158 until depleted, then order TH559EDV307.
Order TH559EDV189 until depleted, then order TH305SV105.
Order TH559EDV190 until depleted, then order TH305SV106.
Order TH559EDV200 until depleted, then order TH305SV103.
Order TH559EDV54B until depleted, then order TH321S.
TH559EDV232 is temporarily replaced by 58024t6, until further notice.

Model Explanation

T - Fitting	T - Fitting
E - Electronic	E - Electronic
U - Urinal 1.0	U - Urinal 1.0
1 - Exposed	1 - Exposed
A - AC Transformer	A - AC Transformer
L - Left Side Supply	L - Left Side Supply
S - Stainless Finish	S - Stainless Finish
1 - 3/4" Outlet	2 - 1-1/4" Outlet
3 - Top Spud	3 - Top Spud