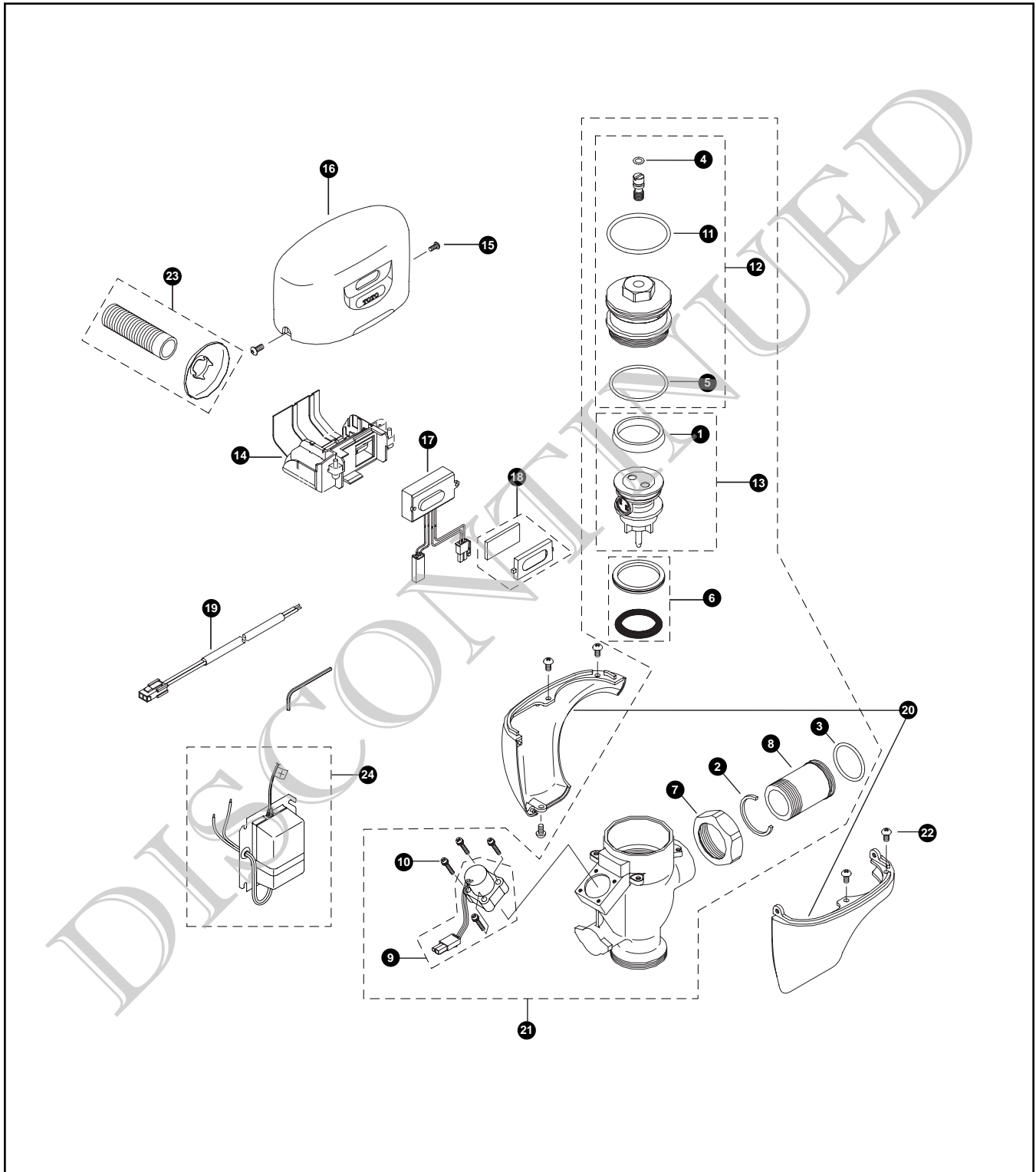


TEU1ANCR
TEU1ANCR-12
TEU1ANCR-22

Sensor Urinal Flush Valve, Exposed - 1.0 GPF
AC Powered (120V AC to 10V DC)



TEU1ANCR
TEU1ANCR-12
TEU1ANCR-22

Sensor Urinal Flush Valve, Exposed - 1.0 GPF
AC Powered (120V AC to 10V DC)

No.	Part Number	Description	Qty	Price	No.	Part Number	Description	Qty	Price
1	TH305SV103	U-Packing (For Piston)	10	\$8.00	Vacuum Breaker Sets				
2	TH305SV105	Locking Rings	10	\$10.00	VB9CP-12	Exposed - Top Spud (3/4" Outlet)	1	\$52.00	
3	TH305SV106	O-Rings (Tail Piece)	10	\$5.00	VB9CP-22	Exposed - Top Spud (1-1/4" Outlet)	1	\$52.00	
4	TH305SV111	O-Rings (Cap Screw)	10	\$5.00	Note: For additional information, refer to the individual vacuum breaker parts sheets.				
5	TH305SV112	O-Rings (Valve Guide)	10	\$7.00	TOTO urinals UT104, UT370 and UT447 have 3/4" Top Spud Inlets.				
6	TH321S	Seat Packing Set	1	\$5.00					
7	TH305SV113	Nut	1	\$7.00					
8	TH305SV114	Tail Piece	1	\$11.00					
9	TH559EDV300	Solenoid Unit & Diaphragm Assembly	1	\$35.00					
10	TH559EDV301	Double Sems Screws M3	4	\$5.00					
11	TH559EDV302	O-Ring (Valve Cap)	1	\$9.00					
12	TH559EDV305	Valve Cap Assembly - Urinal	1	\$25.00					
13	TH559EDV307	Piston Assembly (1.0GPF & 3.5GPF)	1	\$20.00					
14	TH559EDV309	Battery Case - AC	1	\$33.00					
15	TH559EDV310	Hex Socket Pan Head Cap Screw Set	1	\$9.00					
16	TH559EDV312	Top Cover AC Type	1	\$69.00					
17	TH559EDV316	Sensor Controller - AC Urinal	1	\$93.00					
18	TH559EDV317	Glass & Packing Set	1	\$4.00					
19	TH559EDV318	Power Wire	1	\$4.00					
20	TH559EDV321	Lower Urinal Cover Set	1	\$64.00					
21	TH559EDV324	Valve Body for Exposed (Urinal 1.0 GPF)	1	\$215.00					
22	TH559EDV325	Screw Set 8-32 UNC	10	\$5.00					
23	TH559EDV326	Power Wire Pipe Set	1	\$14.00					
24	THU701TR	Transformer (120V AC to 10V DC 1950mA)	1	\$59.00					

Note: THU701TR can be replaced with a Class II UL transformer with primary (120V AC, 60Hz) and secondary (10V DC, 1.95A min.) using only UL Class II No. 18 wires on the secondary side. A maximum of 10 flush valves can be run on one transformer.

Allen Wrench 3/32" is for reference purposes only.

Model Explanation

T - Fitting	T - Fitting
E - Electronic	E - Electronic
U - Urinal 1.0	U - Urinal 1.0
1 - Exposed	1 - Exposed
A - AC Transformer	A - AC Transformer
N - Neutral Rough-In	N - Neutral Rough-In
C - Chrome Finish	C - Chrome Finish
R - Revision	R - Revision
1 - 3/4" Outlet	2 - 1-1/4" Outlet
2 - Top Spud	2 - Top Spud



Perfection by Design

Author - Christopher Weber