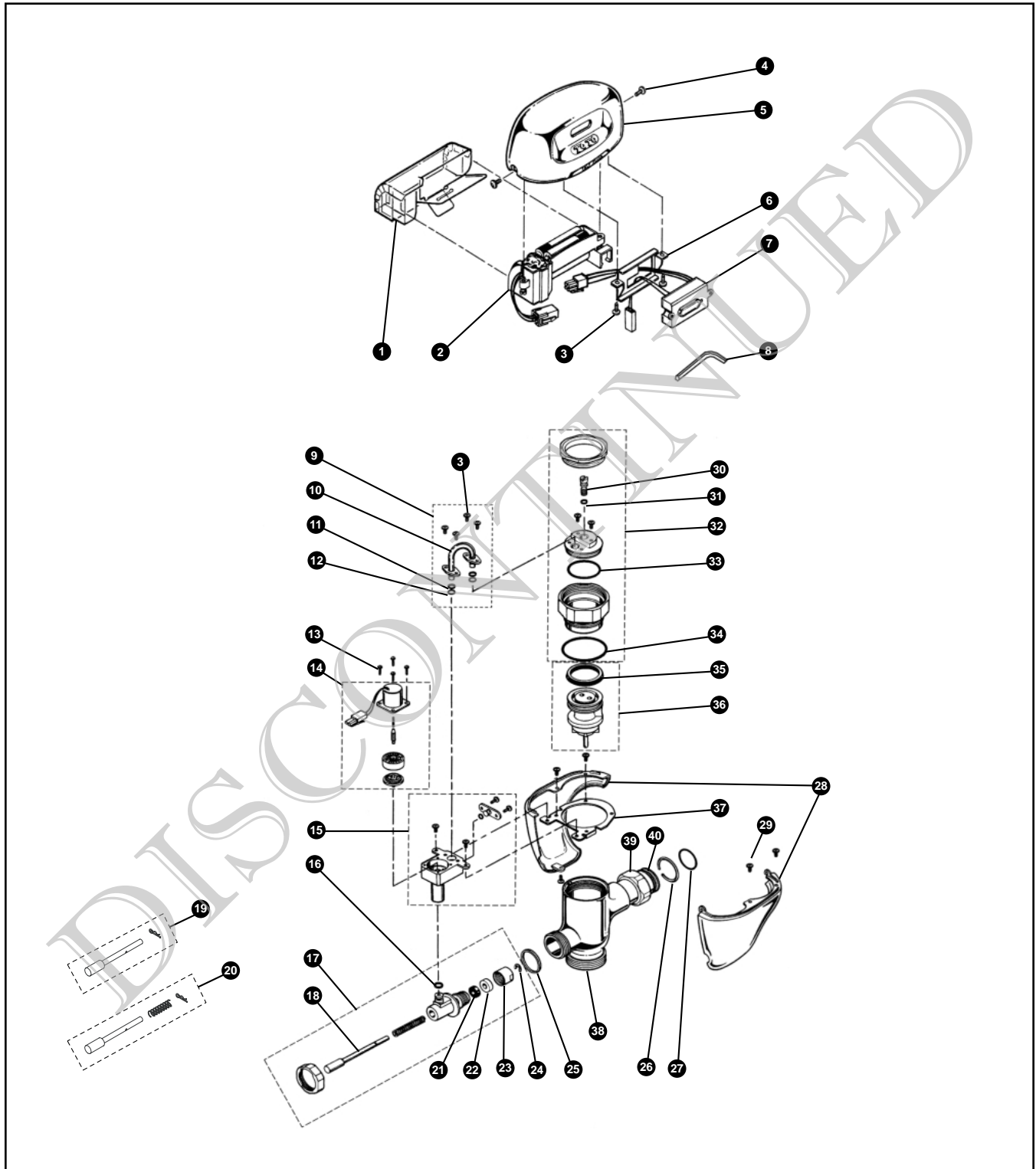


TEW1DNC  
TEW1DNC-32

Sensor Toilet Flush Valve, Exposed - 3.5 GPF  
Battery Powered (6V, DC)



# Discontinued

Reliance Commercial Line

TEW1DNC Series

TEW1DNC  
TEW1DNC-32

Sensor Toilet Flush Valve, Exposed - 3.5 GPF  
Battery Powered (6V, DC)

No.	Part Number	Description	Qty	Price	No.	Part Number	Description	Qty	Price
1	H660101	Battery Case Cover	1	Obsolete	35	R81019-1MZ	U-Packing (For Piston)	10	\$4.00
2	TH559EDV352	Battery Case Assembly	1	\$46.00	36	R15186W	Piston Assembly (1.0GPF & 3.5GPF)	1	\$9.00
3	H660301	Phillips Pan Head Screws (430 SS)	20	\$9.00	37	H662201	Plate	1	\$17.00
4	H660401	Hex Socket Cap Screws (304 SS)	10	\$9.00	38	R11149W-1	Valve Body (EFV) - No Logo	1	\$44.00
5	H660501	Top Cover (DC Type)	1	\$59.00	39	TH305SV113	Nut	1	\$7.00
6	H660601	Sensor Bracket Set	1	\$11.00	40	TH305SV114	Tail Piece	1	\$11.00
7	VCA10A	Sensor Controller - DC Toilet	1	\$101.00	Note: H660301 Phillips Pan Head Screws are 8-32 UNC x 1/4". H660401 Hex Socket Cap Screws are 8-32 UNC x 3/8". Order H660501 until depleted, then order TH559EDV351. H661501 has been replaced by H661501-V1.				
8	3/32"	Allen Wrench	1	Reference					
9	H660701	Copper Tube Sub-Assembly w/Packing	1	\$19.00					
10	H662301	Copper Tube	1	\$11.00	<b>Vacuum Breaker Sets</b>				
11	H660801	Back-Up Rings	10	\$11.00	VB9CP-32 Exposed - Top Spud (1-1/2" Outlet) 1 \$52.00				
12	H660901	O-Rings (Tube Assembly)	10	\$7.00	NOTE: For additional information, refer to the individual vacuum breaker parts sheets.				
13	H661001	Double Sems Screws #4-40	10	\$26.00					
14	VCA503A	Solenoid Unit & Diaphragm Assembly	1	\$30.00					
15	H661101	Solenoid Valve Seat Assembly	1	\$40.00					
16	H661201	O-Rings (Plunger Guide)	10	\$7.00					
17	H661301	Push Button Valve Assembly (Toilet)	1	Obsolete					
18	H661501	Push Button Set	1	Obsolete					
19	H661501-V1	Push Button Set	1	\$39.00					
20	H662002-V1	Push Button Repair Kit (Toilet)	1	\$50.00					
21	TH302RV100	Gaskets (U-Packing)	10	\$6.00					
22	R91112MZ	Guide Rings	10	\$4.00					
23	R23024MZ	Guide Ring Stoppers	10	\$15.00					
24	H661601	E-Rings	10	\$15.00					
25	H661701	Gaskets (Plunger Guide)	10	\$14.00					
26	TH305SV105	Locking Rings	10	\$10.00					
27	TH305SV106	O-Rings (Tail Piece)	10	\$5.00					
28	TH559EDV320	Lower Toilet Cover Set	1	\$68.00					
29	TH559EDV325	Screw Set 8-32 UNC	10	\$5.00					
30	R31057MZ	Cap Adjustment Screws	10	\$15.00					
31	TH305SV111	O-Rings (Cap Screw)	10	\$5.00					
32	H662001	Valve Cap Assembly	1	\$53.00					
33	H662101	O-Rings (Valve Cap)	10	\$13.00					
34	TH305SV112	O-Rings (Valve Guide)	10	\$7.00					

Model Explanation

- T - Fitting
- E - Electronic
- W - Toilet 3.5
- 1 - Exposed
- D - DC Battery
- N - Neutral Rough-In
- C - Chrome Finish
- 3 - 1-1/2" Outlet
- 2 - Top Spud