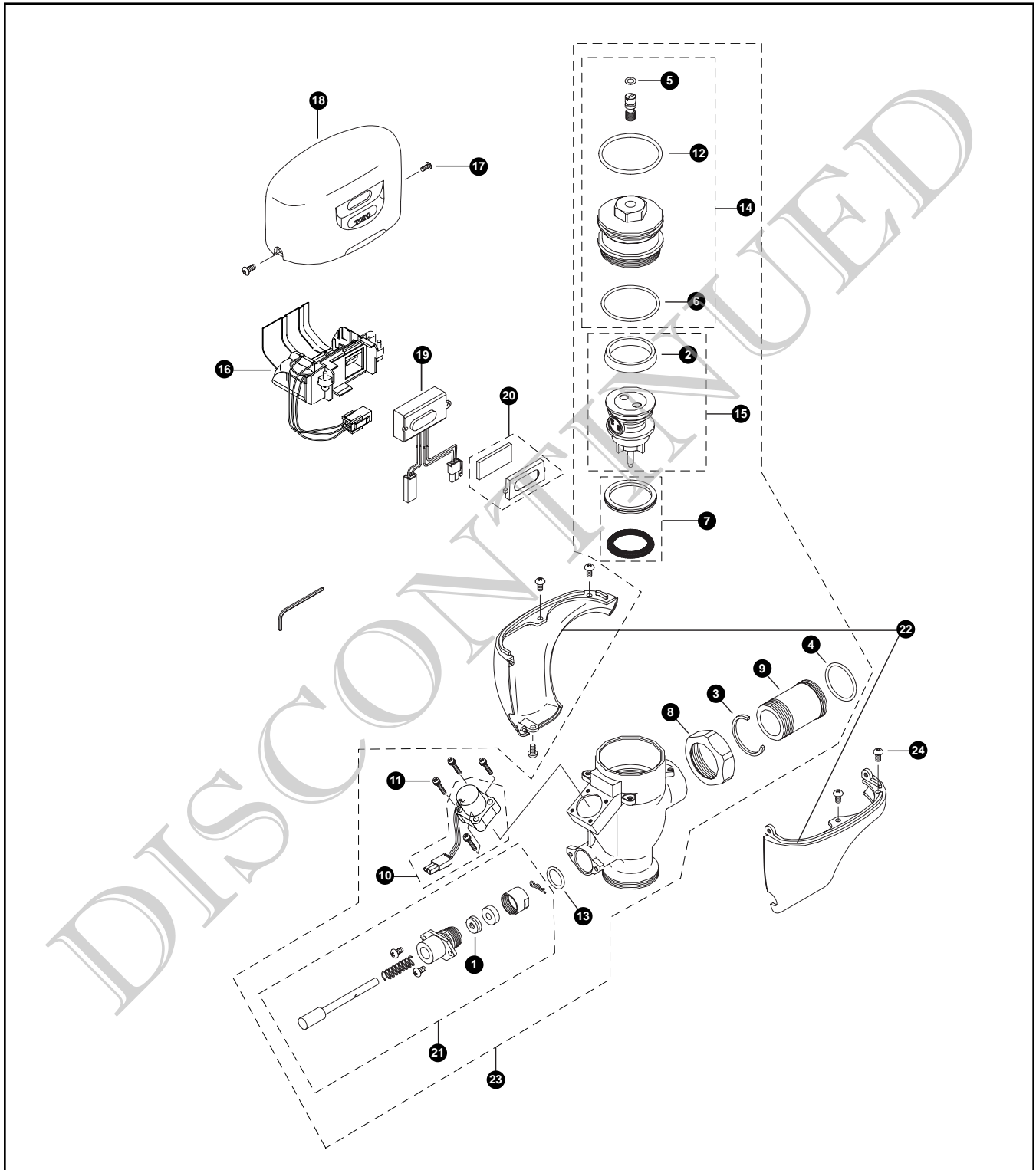


TEW1DNCR
TEW1DNCR-32

Sensor Toilet Flush Valve
Exposed - 3.5 GPF
Battery Powered (6V, DC)



TEW1DNCR
TEW1DNCR-32

Sensor Toilet Flush Valve
Exposed - 3.5 GPF
Battery Powered (6V, DC)

No.	Part Number	Description	Qty	Price	No.	Part Number	Description	Qty	Price
1	TH302RV100	Gaskets (U-Packing)	10	\$6.00	Vacuum Breaker Sets				
2	TH305SV103	U-Packing (For Piston)	10	\$8.00	VB9CP-32	Exposed - Top Spud (1-1/2" Outlet)	1	\$52.00	
3	TH305SV105	Locking Rings	10	\$10.00	Note: For additional information, refer to the individual vacuum breaker parts sheets.				
4	TH305SV106	O-Rings (Tail Piece)	10	\$5.00					
5	TH305SV111	O-Rings (Cap Screw)	10	\$5.00					
6	TH305SV112	O-Rings (Valve Guide)	10	\$7.00					
7	TH321S	Seat Packing Set	1	\$5.00					
8	TH305SV113	Nut	1	\$7.00					
9	TH305SV114	Tail Piece	1	\$11.00					
10	TH559EDV300	Solenoid Unit & Diaphragm Assembly	1	\$35.00					
11	TH559EDV301	Double Sems Screws M3	4	\$5.00					
12	TH559EDV302	O-Ring (Valve Cap)	1	\$9.00					
13	TH559EDV303	O-Ring (Push Rod)	1	\$5.00					
14	TH559EDV304	Valve Cap Assembly - Toilet	1	\$24.00					
15	TH559EDV307	Piston Assembly (1.0GPF & 3.5GPF)	1	\$20.00					
16	TH559EDV308	Battery Case - DC	1	\$41.00					
17	TH559EDV310	Hex Socket Pan Head Cap Screw Set	1	\$9.00					
18	TH559EDV311	Top Cover DC Type	1	\$66.00					
19	TH559EDV313	Sensor Controller - DC Toilet	1	\$81.00					
20	TH559EDV317	Glass & Packing Set	1	\$4.00					
21	TH559EDV319	Push Rod Assembly	1	\$25.00					
22	TH559EDV320	Lower Toilet Cover Set	1	\$68.00					
23	TH559EDV323	Valve Body for Exposed (Toilet 3.5 GPF)	1	\$239.00					
24	TH559EDV325	Screw Set 8-32 UNC	10	\$5.00					

Note: Allen Wrench 3/32" is for reference purposes only.

Model Explanation

- T - Fitting
- E - Electronic
- W - Toilet 3.5
- 1 - Exposed
- D - DC Battery
- N - Neutral Rough-In
- C - Chrome Finish
- R - Revision
- 3 - 1-1/2" Outlet
- 2 - Top Spud



Perfection by Design

Author - Christopher Weber