

To be specified:

**Sensor Urinal Flush Valve**

- Complete Set, Surface Mount, Satin Finish (4" x 4" cover plate)
- Back Spud - TEU3DNS-11 (3/4" V.B.)
- Back Spud - TEU3DNS-21 (1-1/4" V.B.)

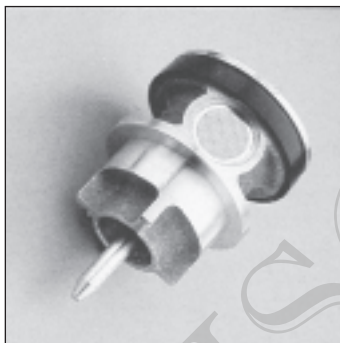
Supplied with:

- Vacuum Breaker & Angle Stop Set - VB13RB-11
  - 3/4" Angle Stop - 10077t6
  - 3/4" Vacuum Breaker - 10075t6
  - Outlet Tube - TH559EDV171
  - Sweat Solder Kit - SJ1
- Vacuum Breaker & Angle Stop Set - VB13RB-21
  - 3/4" Angle Stop - 10077t6
  - 1-1/4" Vacuum Breaker - 10075t7
  - Outlet Tube - TH559EDV172
  - Sweat Solder Kit - SJ1

*Meets the American disability Act Guidelines and ANSI A117.1 requirements for people with disabilities*



TEU3DNS-11



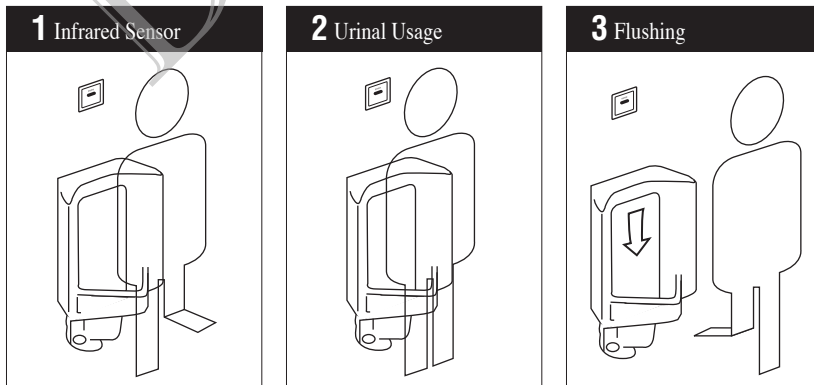
### AUTOMATIC FLUSHING SYSTEM

TOTO, the world leader in advanced plumbing systems, provides sensor operated flush valves for facilities demanding the finest sanitation equipment for busy restrooms. "Hands-free" technology effectively reduces unsanitary conditions from unflushed fixtures.

### SUPERIOR PISTON VALVE


TOTO's piston valve technology is a marked improvement over traditional rubber diaphragm type valves. Longer piston travel and self-cleaning stainless steel debris screen reduce common problems such as continuous running and flooding. The piston seat itself will not warp or mis-seal thus, significantly reducing repair and maintenance costs. A micro-porous cup seal keeps the piston self-lubricated upon each activation with the incoming water supply.

### OPERATING PROCEDURE A sanitary environment without using the hands.



# Battery Powered (6V DC) Sensor Urinal Flush Valve, Concealed (4" x 4") - 1.0 GPF

## SPECIFICATIONS

<b>Product</b>	TEU3DNS-11-Complete Set (3/4" V.B.), Back Spud, Satin Finish TEU3DNS-21-Complete Set (1-1/4" V.B.), Back Spud, Satin Finish
<b>Power supply</b>	Four AA alkaline batteries, 2-year life, based on 4000 cycles per month
<b>Detection range</b>	Self-adjusting to environment
<b>Detection time</b>	Factory setting at six (6) seconds minimum
<b>Water supply</b>	3/4" NPT
<b>Discharge quantity</b>	Factory setting at 1.0 GPF/3.8 LPF
<b>Urinal type</b>	Low consumption wash down and jetted flush design urinals
<b>Ambient temperature</b>	32°-104°F (0°-40°C)
<b>Supply water pressure</b>	15 psi - 125 psi*
<b>Warranty</b>	Limited three (3) year warranty on all component parts. Details available upon request.
<b>Listings</b>	 ASSE 1037

These dimensions and specifications are subject to change without notice.  
\*Water pressures over 80 psi are not recommended for most plumbing fixtures.

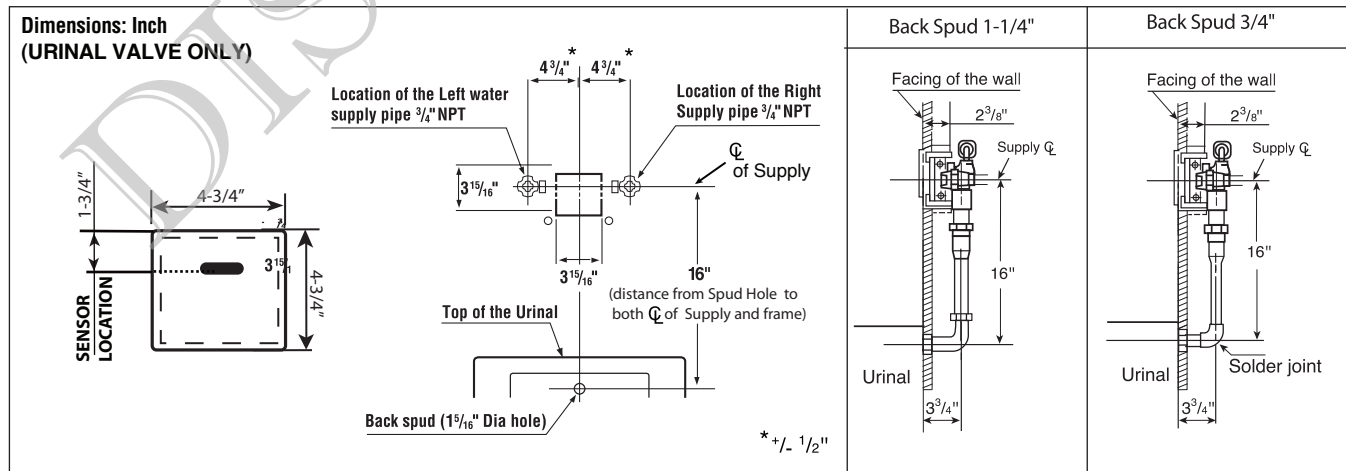
## SUGGESTED ENGINEERING SPECIFICATION:

TOTO Model No. \_\_\_\_\_  
Automatic infrared sensor activated, bronze piston urinal flush valve. 4" x 4" cover plate with brushed stainless finish and vandal resistant mounting screws. Four AA alkaline batteries included with a 2-year life at 4,000 cycles/month. Low consumption 1.0 gallons per flush. Piston valve with

stainless self-cleaning debris screen and self-cleaning solenoid. Electrical sensor components separated from water body of valve and sealed in a waterproof compartment. Fuzzy logic and vandal resistant sensor included. Manual override button included.

## DIAGRAM:

Note:  
Minimum 12"x12" access panel, or walk-in chase is required for service and maintenance.



**TOTO**

TOTO U.S.A., INC. • 1155 Southern Road, Morrow, GA 30260  
Tel. (770) 282-8686 • Fax. (770) 282-8701 • www.totousa.com  
Printed in U.S.A. © TOTO LTD. 07/08 #H80046

Printed on recycled paper 

REV 07/08