

# TOTO®

Perfection by Design

## UT370

### Low Consumption Washout Urinal



UT370



UT370V

- Low consumption one gallon or less per flush
- 14" elongated rim for all handicap applications
- Generous interior dimension with extended privacy shields
- Washout flush action with integral rim flush

Vitreous china low consumption washout urinal. Includes wall hangers, 3/4" inlet spud, 2" I.P.S. outlet flange and rubber gasket. ADA Compliant.

■ **UT370**

Low consumption washout urinal  
Top Spud Inlet.

■ **UT370V**

Low consumption washout urinal  
Back Spud Inlet.

*Colors:*

*Standard* #01 Cotton

*Optional* See price book for  
additional colors

*Recommended flushometer valve:*

*TOTO Manual and Electronic Flush Valves  
are highly recommended for maximum  
performance.*



# UT370

## Low Consumption Washout Urinal

### ■ SPECIFICATIONS

Water Use: 0.5 – 1.0 Gpf  
 Flush System: Washout flush action with integral rim flush  
 Material: Vitreous china  
 Height (Urinal Only) 29<sup>1</sup>/<sub>4</sub>"  
 Width 18<sup>1</sup>/<sub>8</sub>"  
 Rim 14<sup>3</sup>/<sub>16</sub>"  
 Shipping Weight: **UT370 / UT370V**  
 66 lbs.

Shipping Dimensions: **UT370 / UT370V**  
 33<sup>5</sup>/<sub>8</sub>"L x 16<sup>3</sup>/<sub>8</sub>"W  
 x 19<sup>1</sup>/<sub>4</sub>"H

Fixture dimensions and hydraulic performance meet or exceed ANSI/ASME standard A112.19.2M and CAN/CSA B 45 requirements.

Listing / Approvals: IAPMO/UPC, CSA, City of Los Angeles, State of Massachusetts, and others.

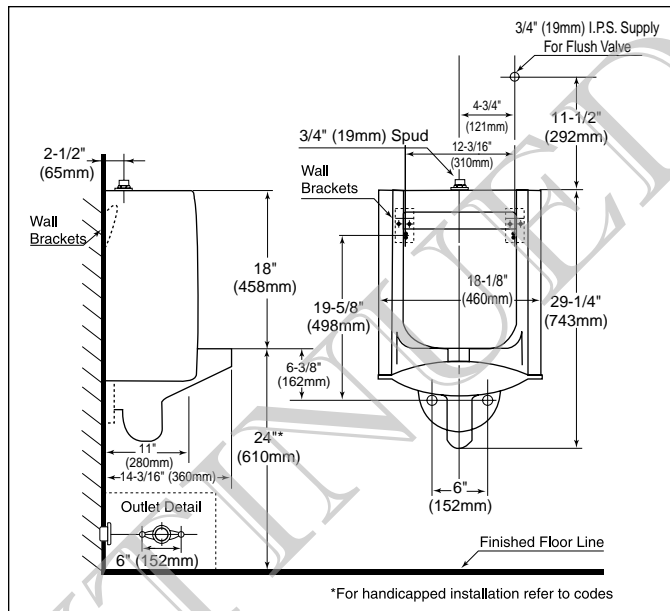


Meets the American Disabilities Act Guidelines and ANSI A117.1 requirements where installed so top of rim is 17" from the finished floor.

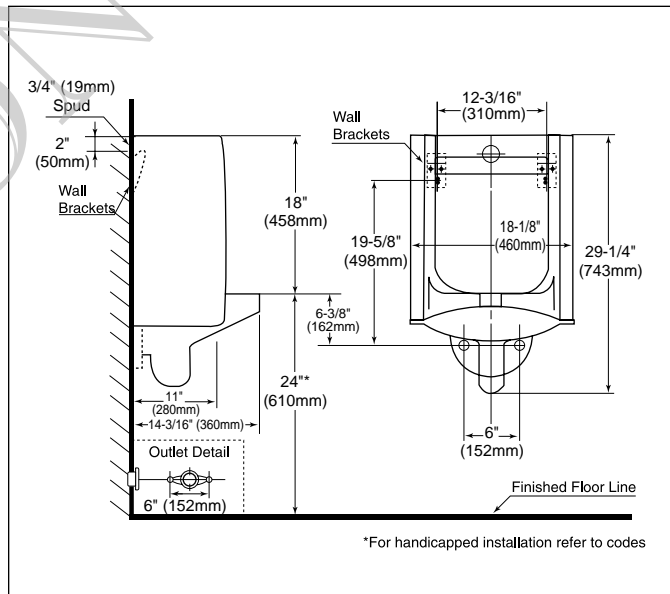
Note: Refer to manufacturer's instructions and local codes for proper flushometer valve installation and requirements

Recommended carrier:  
 Jay R. Smith 0636 (Wall Hanger)  
 0637 (Wall Hanger with bottom)

These dimensions and specifications are subject to change without notice.



UT370



UT370V