

TOTO®

Perfection by Design

AC Powered (120V AC to 10V DC) Sensor Urinal Flush Valve, Exposed - 1.0 GPF

To be specified:

Sensor Urinal Flush Valve

- Valve Only, Nickel Chrome Plated Finish
 - Left and Right Rough - TEU1ANCR
- Complete Set, Nickel Chrome Plated Finish
 - Left and Right Rough - TEU1ANCR-12 (3/4" V.B.)
 - Left and Right Rough - TEU1ANCR-22 (1 1/4" V.B.)

Complete set supplied with:

- Vacuum Breaker & Angle Stop Set - VB9CP-12
 - 3/4" Angle Stop - 10077t4
 - 3/4" Vacuum Breaker - 10075t2
 - Spud Nut & Escutcheon - 71051Nt5
 - Sweat Solder Kit - TH559EDVJSJ
- Vacuum Breaker & Angle Stop Set - VB9CP-22
 - 3/4" Angle Stop - 10077t4
 - 1 1/4" Vacuum Breaker - 10075t5
 - Spud Nut & Escutcheon - 71051Nt7
 - Sweat Solder Kit - TH559EDVJSJ

Optional Accessories:

- Transformer - THU701TR

Meets the American Disabilities Act Guidelines and ANSI A117.1 requirements for people with disabilities.



TEU1ANCR-12

AUTOMATIC FLUSHING SYSTEM

TOTO, the world leader in advanced plumbing systems, provides sensor operated flush valves for facilities demanding the finest sanitation equipment for busy restrooms. "Hands-free" technology effectively reduces unsanitary conditions from unflushed fixtures.

SUPERIOR PISTON VALVE

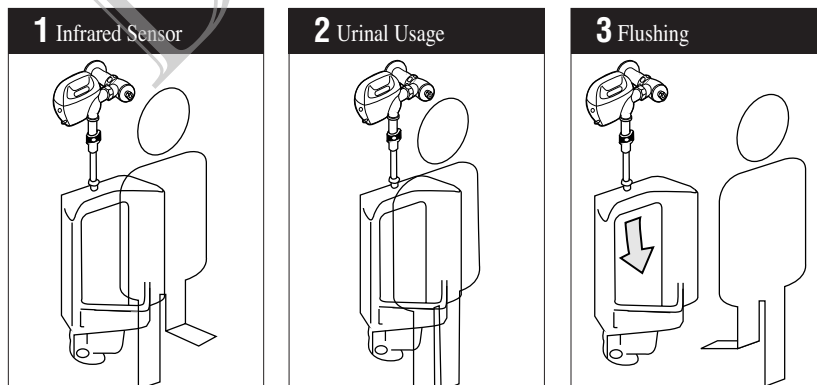
TOTO's piston valve technology is a marked improvement over traditional rubber diaphragm type valves. longer piston travel and self-cleaning stainless steel debris screen reduce common problems such as continuous running and flooding. The piston seat itself will not warp or mis-seal thus, significantly reducing repair and maintenance costs. A micro-porous cup seal keeps the piston self-lubricated upon each activation with the incoming water supply.

FUZZY LOGIC MICROPROCESSOR

"Fuzzy logic" controlled flushing offers the ultimate water conservation without sacrificing performance. The new TOTO urinal flush valves utilize a fuzzy logic control microprocessor which measures the duration and frequency of use, and flushes an appropriate

volume (0.5 – 1.0 gpf). In facilities with periods of frequent use, water conservation is maximized with the use of fuzzy logic technology.

OPERATING PROCEDURE A sanitary environment without using the hands.



NEUTRAL ROUGH-IN





TOTO's sensor flush valve has a neutral rough-in, it can be used as a right or left hand rough-in without modifications.



Reliance Commercial Line

AC Powered(120V AC to 10V DC) Sensor Urinal Flush Valve, Exposed - 1.0 GPF

SPECIFICATIONS

Product	TEU1ANCR–Valve Only, Left and Right Rough, Chrome Plated Finish TEU1ANCR–12 – Complete Set (3/4" V.B.), Left and Right Rough, Chrome Plated Finish TEU1ANCR–22 – Complete Set (1 1/4" V.B.), Left and Right Rough, Chrome Plated Finish
Detection range	Self-adjusting to environment
Detection time	Factory setting at six (6) seconds minimum
Water supply	3/4" NPT
Discharge quantity	Fuzzy logic adjusted flush volume at 28psi (0.5-1.0 GPF)
Urinal type	Low consumption wash down and jetted flush design urinals
Trap seal protection	Automatic flushing once every twenty-four (24) hours, if not used
Ambient temperature	32°-104°F (0°-40°C)
Supply water pressure	15 psi - 125 psi*
Transformer	THU701TR Class 2 Transformer - Overload protection provided. Primary voltage: 120V, AC, 60Hz -> 10VDC, 1950mA. Maximum 10 units per transformer
Warranty	Limited three (3) year warranty on all component parts. Details available upon request.
Listings	  City of Los Angeles   A.S.S.E. 1037

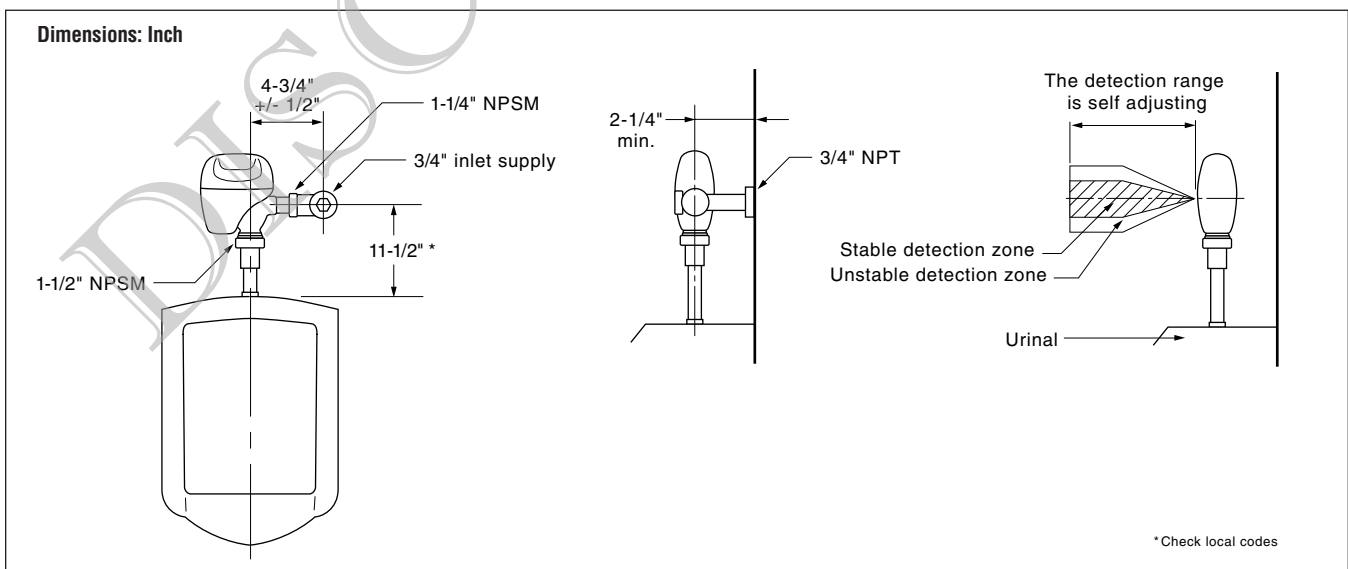
These dimensions and specifications are subject to change without notice.
*Water pressures over 80 psi are not recommended for most plumbing fixtures.

SUGGESTED ENGINEERING SPECIFICATION:

TOTO Model No. _____
Automatic infrared sensor activated, bronze piston operated urinal flush valve. Heavy-duty zinc die cast cover with nickel-chrome finish. Vandal resistant hex head screws. 1.0 gallon flush.

Piston valve and solenoid with self-cleaning mechanism. Automatic flush every twenty four hours if not used. Angle stop and vacuum breaker included with accessories.

DIAGRAM:



TOTO[®]
Perfection by Design

TOTO U.S.A., INC. • 1155 Southern Road, Morrow, GA 30260
Tel. (770) 282-8686 • Fax. (770) 282-8701 • www.totousa.com
Printed in U.S.A. © TOTO LTD. 06/02 #H80035

Printed on recycled paper 

REV 06/02