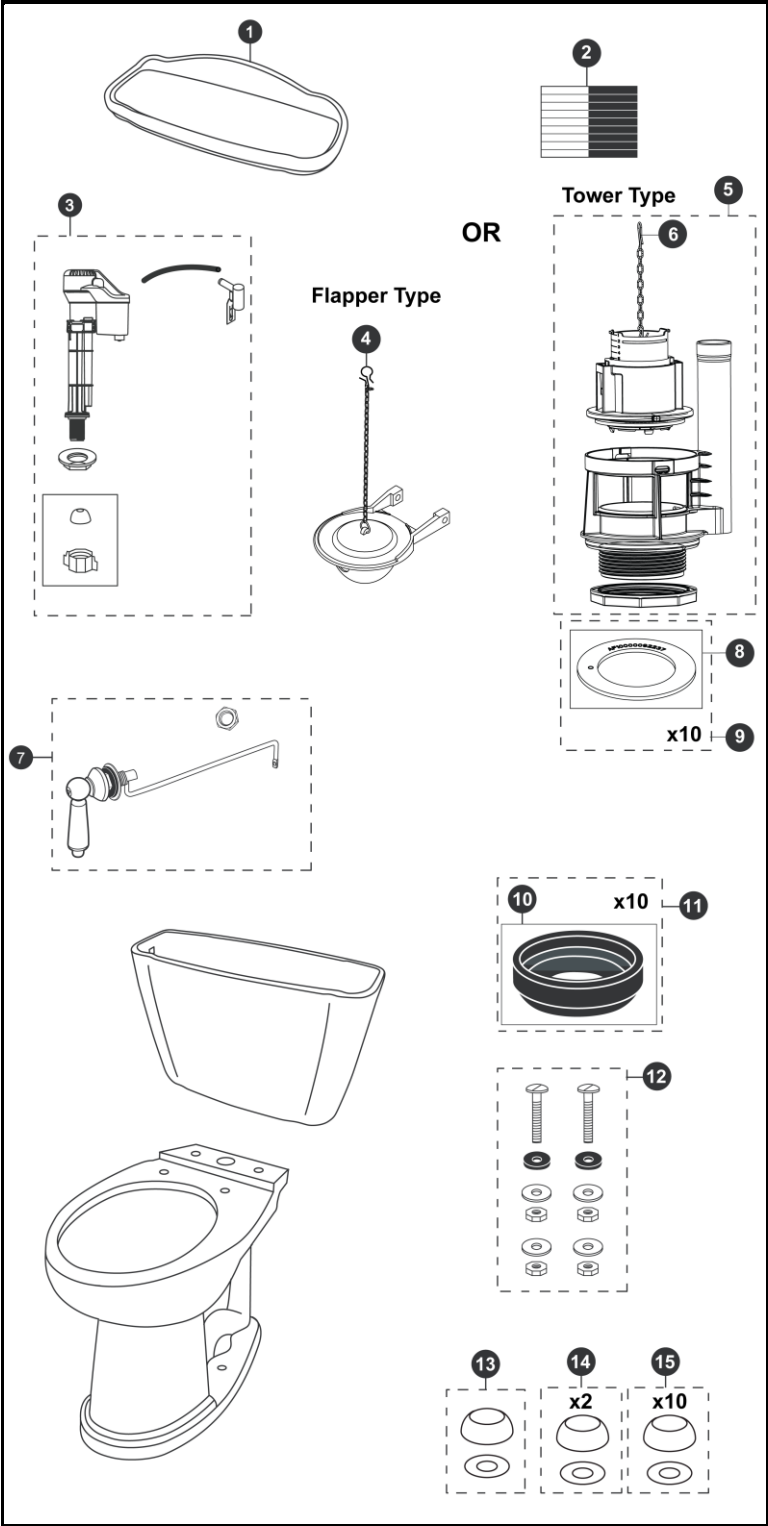


CST754EFN  
C754EF  
ST754E

**Whitney®**  
**1.28 Gpf Toilet, Elongated,**  
**E-MAX®, 12" Rough-In,**  
**Universal Height**



Item	Part	Description
1	TCU754CRE#01	Tank Lid w/ Velcro Tape - Cotton
	TCU754CRE#03	Tank Lid w/ Velcro Tape - Bone
	TCU754CRE#11	Tank Lid w/ Velcro Tape - Colonial White
	TCU754CRE#12	Tank Lid w/ Velcro Tape - Sedona Beige
	TCU754CRE#51	Tank Lid w/ Velcro Tape - Ebony
2	THU107	Velcro Tape
3	TSU708	Fill Valve
4	THU500S	Flapper w/ Chain
5	THU445.15G-A	Drain Valve for Tower Type
6	THU440-A	Flush Tower
7	THU141#01	Trip Lever - Cotton
	THU141#03	Trip Lever - Bone
	THU141#11	Trip Lever - Colonial White
	THU141#12	Trip Lever - Sedona Beige
	THU141#51	Trip Lever - Ebony
	THU141#CP	Trip Lever - Chrome Polished
	THU141#BN	Trip Lever - Brushed Nickel
	THU141#PN	Trip Lever - Polished Nickel
	THU141#RB	Trip Lever - Oil Rubbed Bronze
	THU141#SB	Trip Lever - Satin Brass
8	THU407	Seal Gasket (1 piece)
9	THU370	Seal Gasket (10 pieces)
10	9BU024E	3" Tank to Bowl Gasket
11	THU131	Tank to Bowl Gaskets (10 pieces)
12	TSU01D	Tank Mounting Kit
13	THU044#01	Bolt Cap Set - Cotton (1 set)
	THU044#03	Bolt Cap Set - Bone (1 set)
	THU044#11	Bolt Cap Set - Colonial White (1 set)
	THU044#12	Bolt Cap Set - Sedona Beige
	THU044#51	Bolt Cap Set - Ebony
14	THU044S#01	Bolt Cap Set - Cotton (2 pieces)
	THU044S#03	Bolt Cap Set - Bone (2 pieces)
	THU044S#11	Bolt Cap Set - Colonial White (2 pieces)
	THU044S#12	Bolt Cap Set - Sedona Beige (2 pieces)
	THU044S#51	Bolt Cap Set - Ebony (2 pieces)
15	THU098#01	Bolt Cap Sets - Cotton (20 pieces)
	THU098#03	Bolt Cap Sets - Bone (20 pieces)
	THU098#11	Bolt Cap Sets - Colonial White (20 pieces)
	THU098#12	Bolt Cap Sets - Sedona Beige (20 pieces)
	THU098#51	Bolt Cap Sets - Ebony (20 pieces)

**Note:**  
THU141 has Left Hand threads.

Product Number Explanations		
Two-Piece Toilet	Tank	Bowl
(CST) Gravity Type Toilet	(ST) Tank	(C) Bowl
(754) Model	(754) Model	(754) Model
(E) E-MAX®	(E)E-MAX®	(E) E-MAX®
(F) Universal Height		(F) Universal Height
(N) Revision		

Actual Product may vary slightly from illustration.