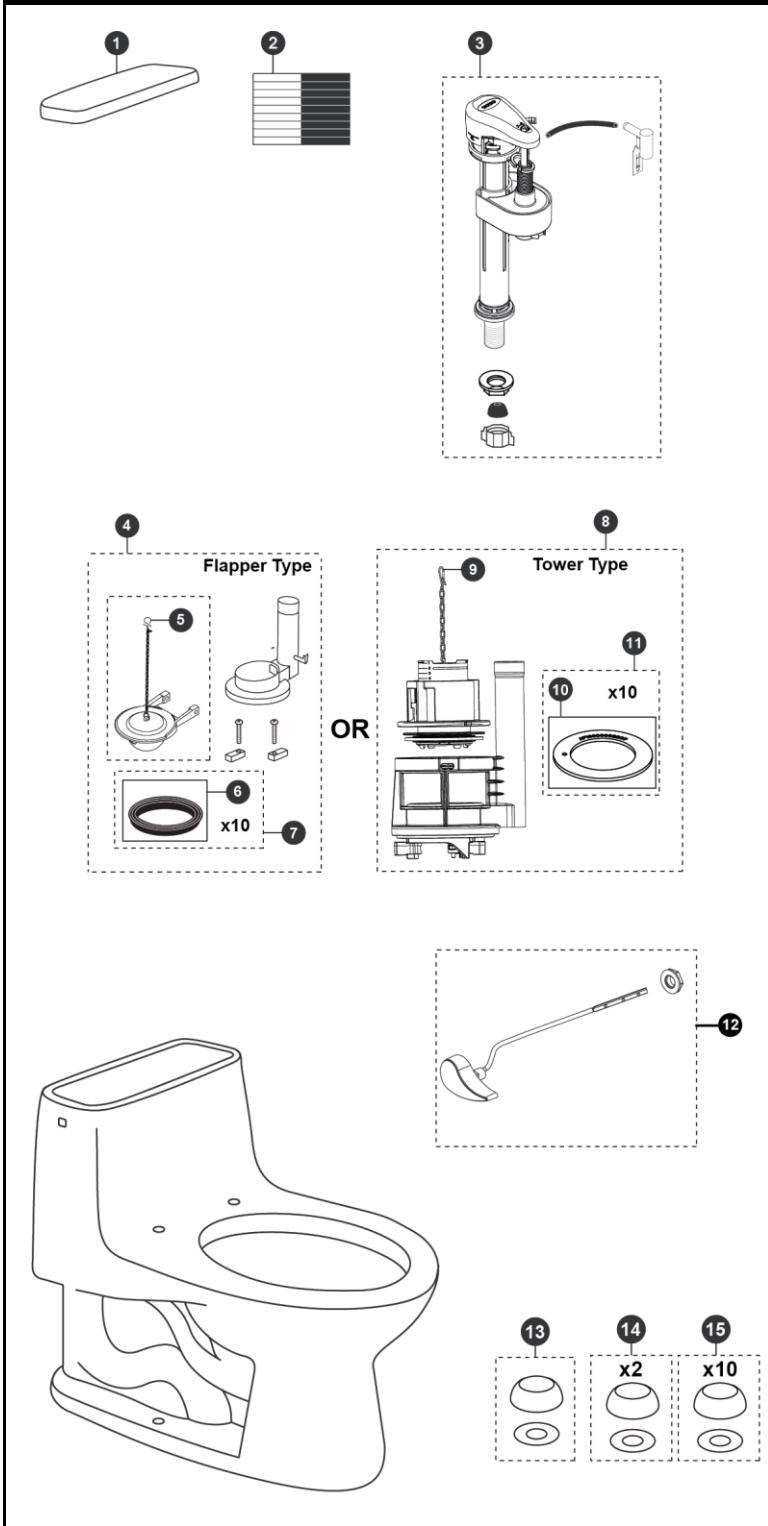


MS854114E(G) MS854114EL(G)  
 CST854E(G) CST854EL(G)  
 CST854E(G)T CST854EL(G)T

**Eco Ultramax®**  
**1.28 Gpf Toilet, Elongated,**  
**E-MAX®, 12" Rough-In,**  
**(including ADA, CEFIONTECT®)**



Item	Part	Description
1	TCU854CRE#01	Tank Lid w/ Velcro Tape
	TCU854CRE#03	Tank Lid w/ Velcro Tape
	TCU854CRE#11	Tank Lid w/ Velcro Tape
	TCU854CRE#12	Tank Lid w/ Velcro Tape
	TCU854CRE#51	Tank Lid w/ Velcro Tape
2	THU107	Velcro Tape
3	TSU51A	Fill Valve
4	THU251P	Flush Valve Assembly w/ Flapper
5	THU500S	Flapper w/ Chain
6	9BU002E	Flush Valve Gasket
7	THU097	Flush Valve Gasket (10 pieces)
8	THU453.10C-A	Drain Valve
9	THU440-A	Flush Tower
10	THU407	Seal Gasket (1 piece)
11	THU370	Seal Gasket (10 piece)
12	THU808#01-A	Trip Lever
	THU808#03-A	Trip Lever
	THU808#11-A	Trip Lever
	THU808#12-A	Trip Lever
	THU808#51-A	Trip Lever
	THU808#CP-A	Trip Lever - Chrome Plated
13	THU044#01	Bolt Cap Set - Cotton (1 set)
	THU044#03	Bolt Cap Set - Bone (1 set)
	THU044#11	Bolt Cap Set - Colonial White (1 set)
	THU044#12	Bolt Cap - Sedona Beige
14	THU044S#01	Bolt Cap Set (2 pieces)
	THU044S#03	Bolt Cap Set (2 pieces)
	THU044S#11	Bolt Cap Set (2 pieces)
	THU044S#12	Bolt Cap Set (2 pieces)
	THU044S#51	Bolt Cap Set 2 pieces
15	THU098#01	Bolt Cap & Base (20 pieces)
	THU098#03	Bolt Cap & Base (20 pieces)
	THU098#11	Bolt Cap & Base (20 pieces)
	THU098#12	Bolt Cap & Base (20 pieces)
	THU098#51	Bolt Cap & Base (20 pieces)

**Note:**

Product Number Explanations	
<b>One-Piece Toilet</b>	<b>Colors</b>
(MS) Toilet & Seat Combination	(#01) Cotton
(CST) Gravity Type Toilet	(#03) Bone
(854) Toilet Model	(#11) Colonial White
(114) Seat Model	(#12) Sedona Beige
(E) E-MAX®	(#51) Ebony
(L) ADA Compliant	
(G) CEFIONTECT®	
(T) Drain Valve Tower	

Actual Product may vary slightly from illustration.