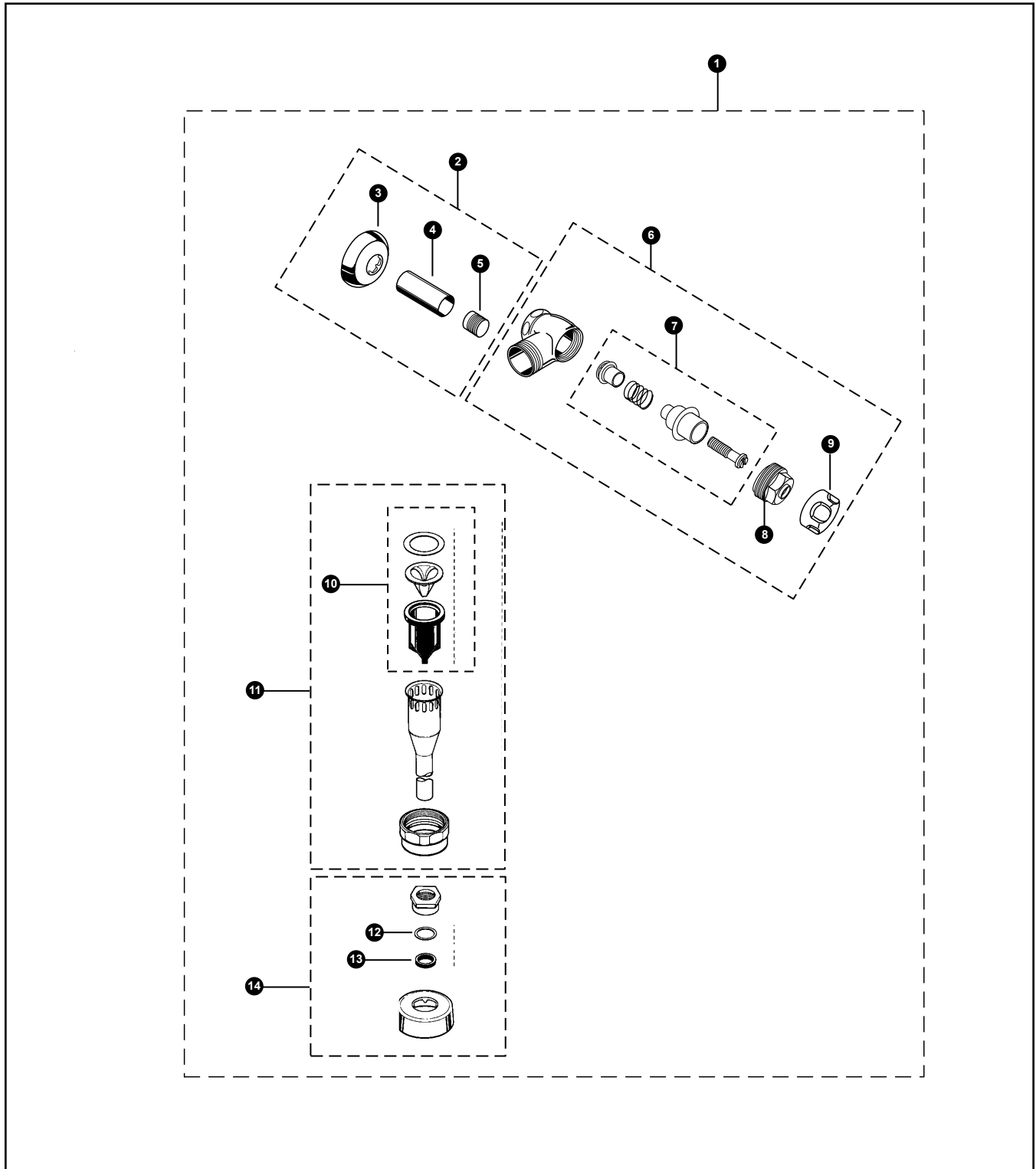


Vacuum Breaker & Angle Stop Set
for Urinal w/ Exposed, Top Spud
3/4" Outlet



VB9CP-12

**Vacuum Breaker & Angle Stop Set
for Urinal w/ Exposed, Top Spud
3/4" Outlet**

No.	Part Number	Description	Qty	No.	Part Number	Description	Qty
1	VB9CP-12	Exposed - Top Spud (3/4" Outlet)	1				
2	TH559EDVSJ1	Sweat Solder Kit 3/4" for Urinal	1				
3	71051NT8	Wall Flange 3/4"	1				
4	SC1	Sleeve Cover 3/4"	1				
5	SJ1	Solder Adapter 3/4"	1				
6	10077T4	Angle Stop (3/4") Urinal - Chrome Plated	1				
7	10077T3-PQ	Angle Stop Repair Kit (3/4")	1				
8	10077T3-QQ	Bonnet (3/4")	1				
9	10077T4-XQ	Angle Stop Cap (3/4")	1				
10	92013MZ	Vacuum Breaker Repair Kit	1				
11	10075T2	Tube Assembly (3/4" x 8-1/2")	1				
12	R72116MZ	Friction Ring 3/4"	10				
13	R81376MZ	Gaskets 3/4"	10				
14	71051NT5	Spud Nut & Escutcheon 3/4"	1				

Note: TOTO urinals UT104, UT370, and UT447V have 3/4" Top Spud Inlets.

Model Explanation

- V - Vacuum
- B - Breaker
- 9 -
- C - Chrome Finish
- P - Plated
- 1 - 3/4" Outlet
- 2 - Top Spud