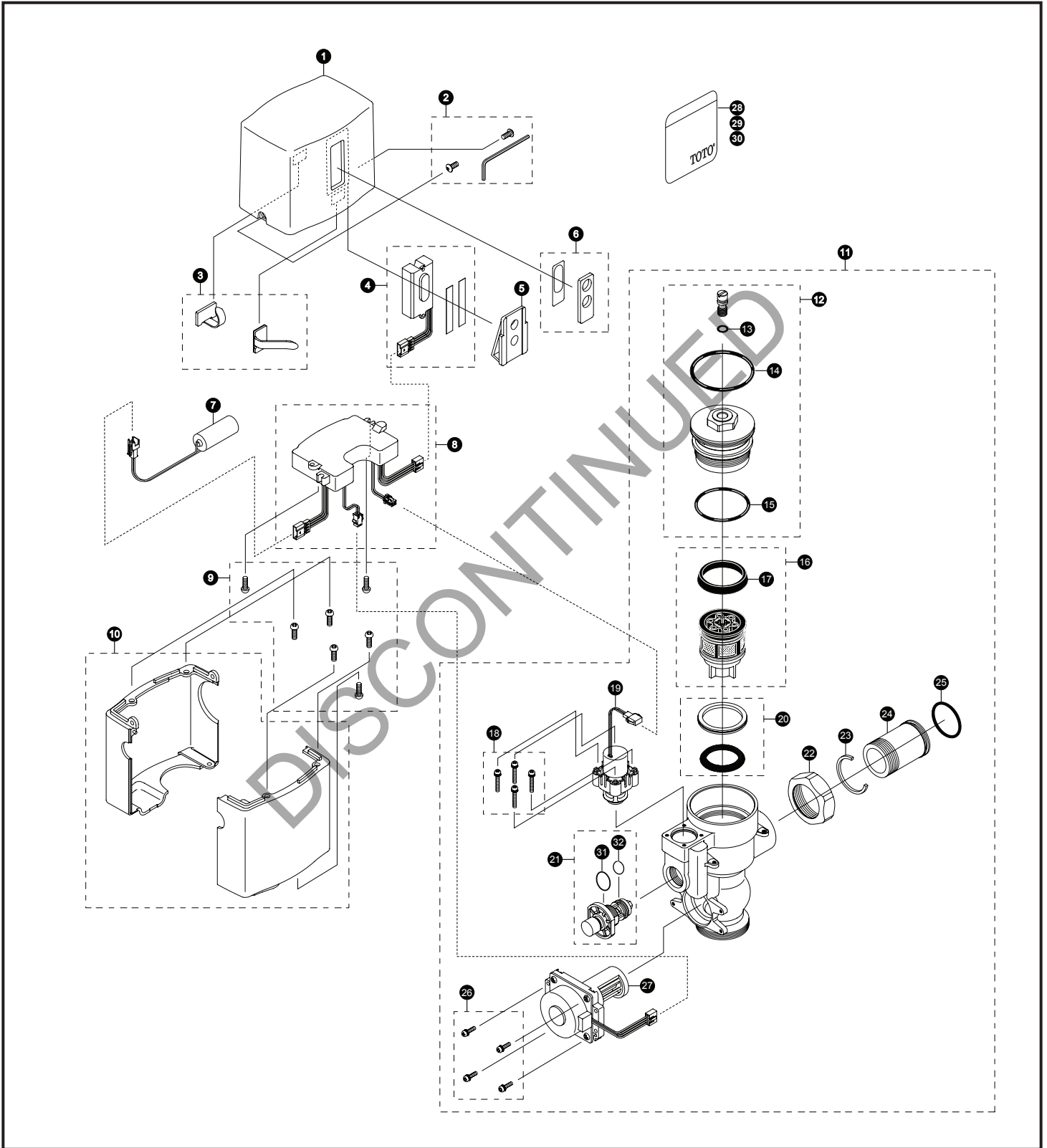


**EcoPower® Sensor Toilet Flush Valve  
Exposed - 1.28 Gpf, 24" Vacuum Breaker  
Hydro-Power Charge**



## EcoPower® Sensor Toilet Flush Valve Exposed - 1.28 Gpf, 24" Vacuum Breaker Hydro-Power Charge

Item	Part	Description
1	TH559EDV511	Top Cover
2	THU3051	Set Screw & Allen Wrench Set
3	TH559EDV517	Clamp Set
4	TH559EDV532	Sensor Controller & Packing Set
5	TH559EDV533	Holder
6	TH559EDV531	Glass & Packing Set
7	THP3053	Back-Up Battery
8	TH559EDV518	Controller (Toilet)
9	TH559EDV513	M4 Screws (5 pieces)
10	TH559EDV512	Lower Cover Set
11	TH559EDV535	Valve Body for Exposed (Toilet 1.28 Gpf)
12	TH559EDV507	Valve Cap Assy (Toilet 1.6/1.28 Gpf)
13	TH305SV111	O-Rings (Cap Screw)(10 Pieces)
14	TH305SV120	O-Rings (Valve Cap)(10 Pieces)
15	TH305SV112	O-Rings (Valve Guide)(10 Pieces)
16	TH323V103R	Piston Assembly (1.6/1.28 Gpf) (10 Pieces)
17	TH305SV103	U-Packing (For Piston)(10 Pieces)
18	TH559EDV301	Double Sems Screws M3 (4 pieces)
19	TH559EDV510	Solenoid Unit & Diaphragm Assy
20	TH321	Seal Washer Kit
21	TH559EDV506	Manual Flushing Button
22	TH305SV113	Nut
23	TH305SV105	Locking Rings (10 Pieces)
24	TH305SV114	Tail Piece
25	TH305SV106	O-Rings (Tail Piece)(10 Pieces)
26	TH559EDV505	Double Sems Screws M3 (4 pieces)
27	TTH559EDV503	Hydro-Power Generator (Toilet)
28	0EU5160	1.28 GPF Water Saving Sticker
29	0EU3017	1.28 GPF Water Saving Sticker
30	0EU3015	1.28 GPF Water Saving Sticker
31	THP3013	O-ring, cap (10/bag)
32	THP3242	O-ring (1/bag)

### Vacuum Breaker Sets

VBXCP-32 Exposed - Top Spud (1-1/2" Outlet)

Note: For additional information, refer to the individual vacuum breaker parts sheets.

### Product Number Explanations

#### Flush Valve

- (T) Fitting
- (E) Electronic
- (T) Toilet 1.6 Gpf
- (6) Exposed 24" Vacuum Breaker Tube
- (G) Dynamo (Hydro Generated)
- (N) Neutral Rough-In
- (C) Chrome Finish
- (3) 1-1/2" Outlet
- (2) Top Spud