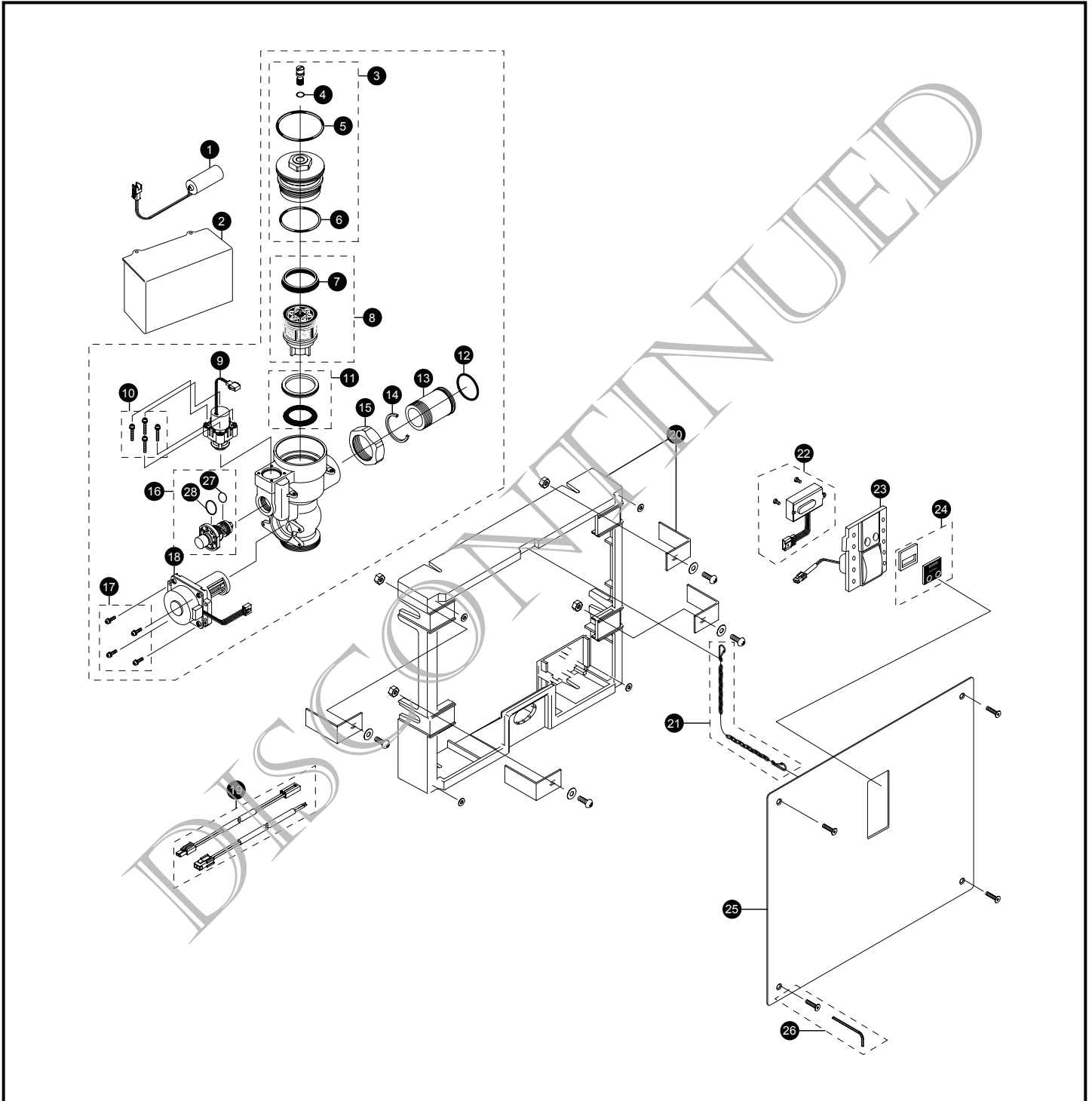


TET2GN#SS Series

TET2GN31#SS
TET2GN32#SS
TET2GN33#SS
TET2GN#SS

EcoPower® Sensor Toilet Flush Valve Concealed (14" x 12") - 1.6 Gpf Hydro-Power Charge



TET2GN#SS Series

TET2GN31#SS
 TET2GN32#SS
 TET2GN33#SS
 TET2GN#SS

EcoPower® Sensor Toilet Flush Valve Concealed (14" x 12") - 1.6 Gpf Hydro-Power Charge

| Item | Part | Description | Item | Part | Description |
|------|-------------|--------------------------------------|---|------|---|
| 1 | THP3053 | Back-Up Battery | Vacuum Breaker Sets | | |
| 2 | TH559EDV548 | Toilet Valve Controller | VB13RB-31 | | Concealed - Back Spud (1-1/2" Outlet) |
| 3 | TH559EDV507 | Valve Cap Assy (Toilet 1.6/1.28 GPF) | VB9RB-32 | | Concealed - Top Spud (1-1/2" Outlet) |
| 4 | TH305SV111 | O-Rings (Cap Screw) (10 Pieces) | VB13RB-33 | | Concealed - Back Spud Floor Mount (1-1/2" Outlet) |
| 5 | TH305SV120 | O-Rings (Valve Cap) (10 Pieces) | Note: For additional information, refer to the individual vacuum breaker parts sheets. | | |
| 6 | TH305SV112 | O-Rings (Valve Guide) (10 Pieces) | | | |
| 7 | TH305SV103 | U-Packing (For Piston) (10 Pieces) | | | |
| 8 | TH323V103R | Piston Assembly (1.6/1.28 GPF) | | | |
| 9 | TH559EDV510 | Solenoid Unit & Diaphragm Assembly | | | |
| 10 | TH559EDV301 | Double Sems Screws M3 (4 pieces) | | | |
| 11 | TH321 | Seal Washer Kit | | | |
| 12 | TH305SV106 | O-Rings (Tail Piece) (10 Pieces) | | | |
| 13 | TH305SV114 | Tail Piece | | | |
| 14 | TH305SV105 | Locking Rings (10 Pieces) | | | |
| 15 | TH305SV113 | Nut | | | |
| 16 | TH559EDV558 | Manual Flushing Button | | | |
| 17 | TH559EDV505 | Double Sems Screws M3 (4 pieces) | | | |
| 18 | TH559EDV503 | Hydro-Power Generator (Toilet) | | | |
| 19 | TH559EDV556 | Extension Wire Set | | | |
| 20 | TH559EDV341 | Wall Frame | | | |
| 21 | TH559EDV345 | Chain Set | | | |
| 22 | TH559EDV550 | Sensor Controller & Screws Set | | | |
| 23 | TH559EDV552 | Touch Button Assembly Unit | | | |
| 24 | TH559EDV553 | Cover Glass | | | |
| 25 | TH559EDV554 | Big Cover Plate | | | |
| 26 | 8HU5019 | 4 Vandal Resist Screws With Wrench | | | |
| 27 | THP3242 | O-ring (1/bag) | | | |
| 28 | THP3013 | O-ring, cap (10/bag) | | | |

Product Number Explanations

Flush Valve

(T) Fitting
 (E) Electronic
 (T) Toilet 1.6
 (2) Concealed Large Plate
 (G) Dynamo (Hydro Generator)
 (N) Neutral Rough-In
 (31) 1-1/2" Outlet_Back Spud
 (32) 1-1/2" Outlet_Top Spud
 (33) 1-1/2" Outlet_Back Spud Floor Mount
 (#SS) Stainless Finish