

# VB0932(X)(R)#RB

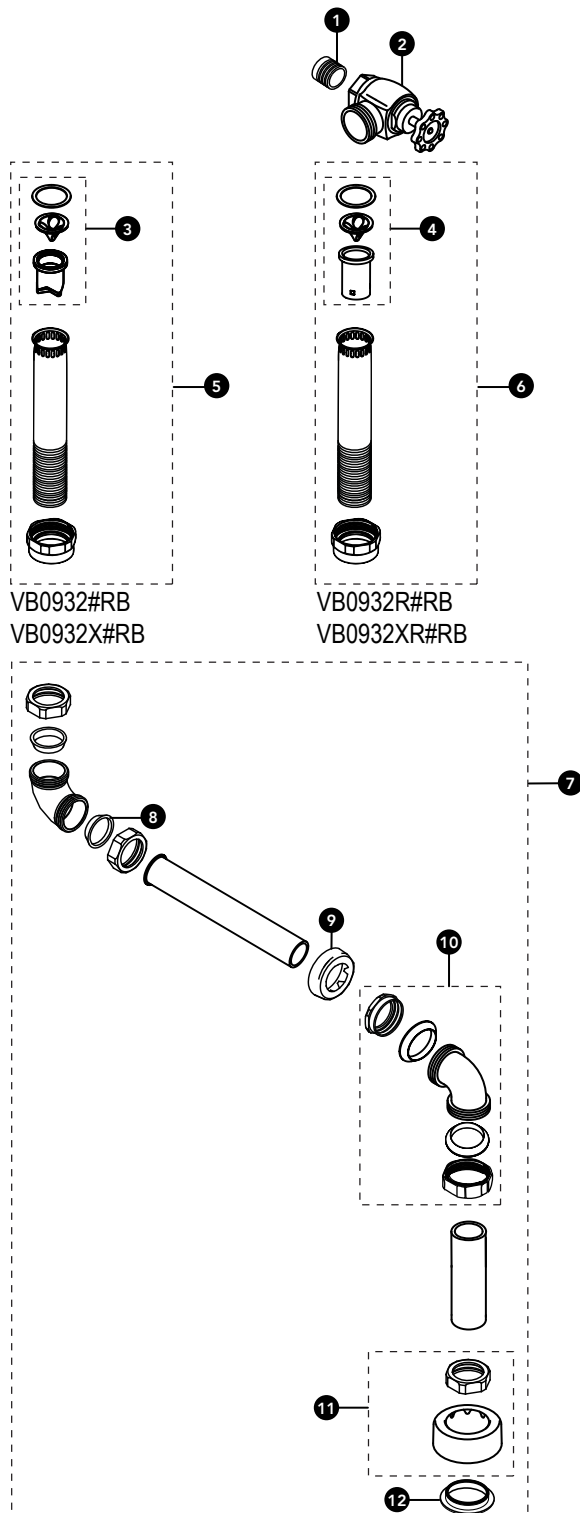
## Vacuum Breaker & Angle Stop Set for Toilet w/ Concealed, Top Spud 1-1/2" Outlet

VB0932#RB

VB0932XR#RB

VB0932X#RB

VB0932R#RB



Item	Part	Description
1	SJ3	Solder Adapter 1"
	THP3317	Solder Adapter 1" RW*
2	10077T5	Angle Stop (1") Toilet - Rough Brass
	THP3314#RB	Angle Stop (1") Toilet - Rough Brass RW*
3	THP3292	Vacuum Breaker Repair Kit
4	THP3545	Vacuum Breaker Repair Kit (Skirted)
5	THP3286#RB	Tube Assembly (1-1/2" x 9") for VB0932#RB
	THP3326#RB	Tube Assembly (1-1/2" x 9") RW* for VB0932X#RB
6	THP3286R#RB	Tube Assembly (1-1/2" x 9") for VB0932R#RB
	THP3326R#RB	Tube Assembly (1-1/2" x 9") RW* for VB0932XR#RB
7	TH559EDV177	Outlet Tube - Top Spud Inlet for VB0932(R)#RB
	THP3509	Outlet Tube - Top Spud Inlet RW* for VB0932XR#RB
8	THU3011	1-1/2" Tubular Washers (set of 5 pc)
9	71051NT10	Wall Flange (1-1/2" C.P.)
10	TH559EDVEJ1	Elbow (1-1/2" C.P.) for VB0932(R)#RB
	THP3510	Elbow (1-1/2" C.P.) RW* for VB0932X(R)#RB
11	71051NT6	Spud Nut & Escutcheon 1-1/2"
12	THU3012	1-1/2" Flanged Washers (set of 5 pc)

\* RW = for Reclaimed Water. Includes VB0932X#RB, VB0932XR#RB.

Note: For Reclaimed Water (RW) applications use the RW version parts where applicable. Do not use standard vacuum breaker, standard control stop, or components with reclaimed water flush valve.