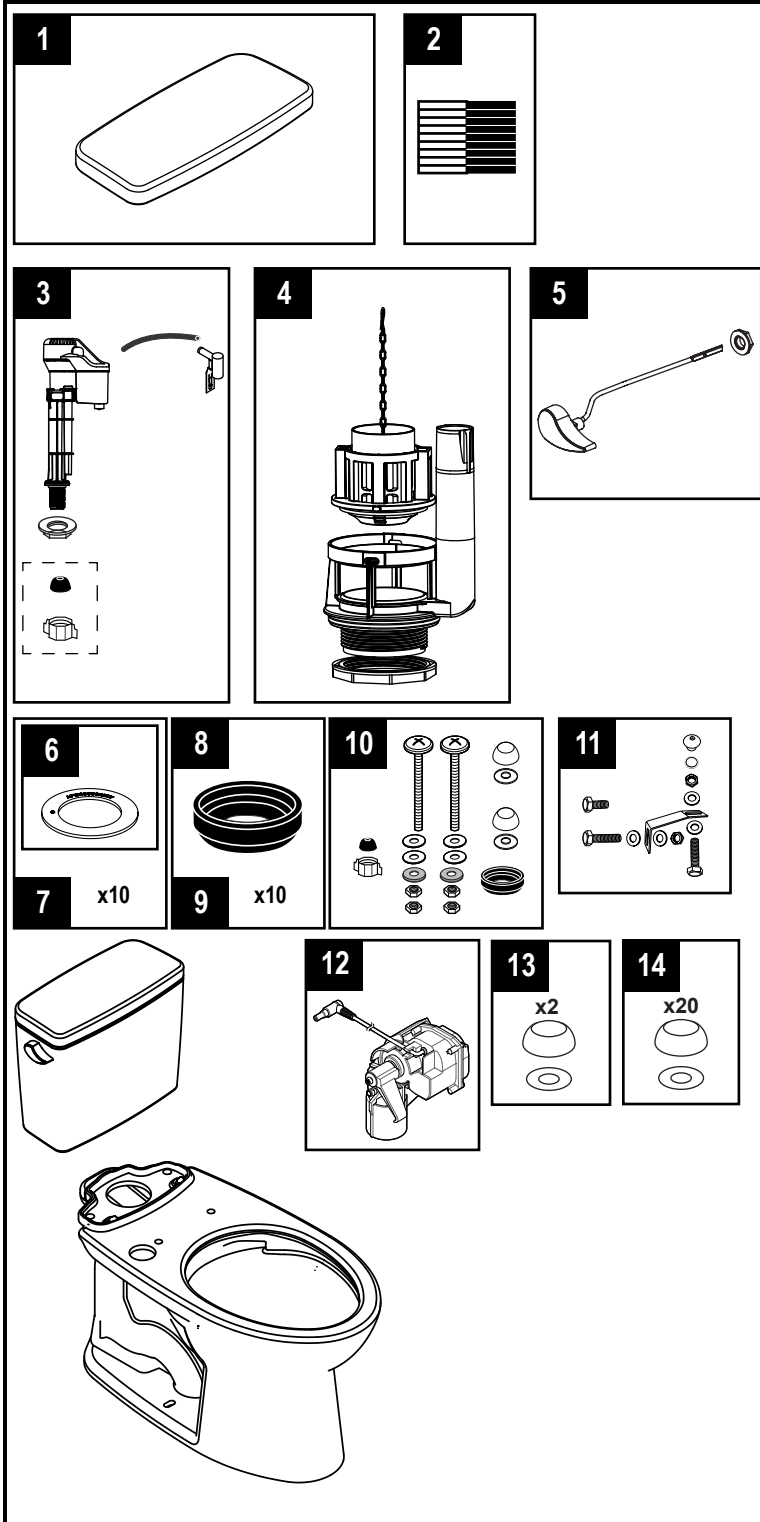


**CST776CEF(R)G.10, MS776124CEFG.10, MW7763046CEFG(A).10, MW7763056CEFG(A).10 &
MW7763074CEFG.10, MW7763084CEFG.10**

| | | | |
|--|---|---|--|
| CST776CEFG.10 C776CEFG.10 ST776EA | CST776CEFRG.10 C776CEFG.10 ST776ER | MS776124CEFG.10 C776CEFGT40.10 ST776EA | MW7763046CEFG(A).10 C776CEFGT40.10 ST776EA |
| MW7763056CEFG(A).10 C776CEFGT40.10 ST776EA | MW7763074CEFG.10 C776CEFGT40.10 ST776EA | MW7763084CEFG.10 C776CEFGT40.10 ST776EA | ST776ER ST776EB ST776ED ST776EDB |

**10" Drake®
1.28 Gpf Toilet, Elongated
TORNADO FLUSH®, Universal Height,
(including CEFIONTECT®), Right Hand Trip Lever**



| Item | Part | Description |
|------|-------------|---|
| 1 | TCU776CR#01 | Tank Lid w/ Velcro Tape - Cotton |
| | TCU776CR#03 | Tank Lid w/ Velcro Tape - Bone |
| | TCU776CR#11 | Tank Lid w/ Velcro Tape - Colonial White |
| | TCU776CR#12 | Tank Lid w/ Velcro Tape - Sedona Beige |
| | TCU776CR#51 | Tank Lid w/ Velcro Tape - Ebony |
| 2 | THU107 | Velcro Tape |
| 3 | TSU708 | Fill Valve Assembly |
| 4 | THU825-A | Flush Valve Assembly, 1.28 GPF |
| | THU826-A | Flush Valve Assembly, 1.28 GPF (Insulated Tank) |
| 5 | THU808#CP-A | Trip Lever Handle - Chrome Plated |
| | THU808#PN-A | Trip Lever Handle - Polished Nickel |
| | THU808#BN-A | Trip Lever Handle - Brushed Nickel |
| | THU808#PB-A | Trip Lever Handle - Polished Brass |
| | THU808#RB-A | Trip Lever Handle - Oil Rubbed Bronze |
| | THU808#01-A | Trip Lever Handle - Cotton |
| | THU808#03-A | Trip Lever Handle - Bone |
| | THU808#11-A | Trip Lever Handle - Colonial White |
| | THU808#12-A | Trip Lever Handle - Sedona Beige |
| | THU808#51-A | Trip Lever Handle - Ebony |
| | THU820#01-A | Trip Lever Right Handle - Cotton |
| | THU820#CP-A | Trip Lever Right Handle - Chrome Plated |
| | THU820#PN-A | Trip Lever Right Handle - Polished Nickel |
| | THU820#BN-A | Trip Lever Right Handle - Brushed Nickel |
| | THU820#PB-A | Trip Lever Right Handle - Polished Brass |
| 6 | THU407 | Flush Valve Seal Gasket - 1pc |
| 7 | THU370 | Flush Valve Seal Gasket - 10pc |
| 8 | 9BU024E | Tank to Bowl Gasket - 1pc |
| 9 | THU131 | Tank to Bowl Gasket - 10pc |
| 10 | THU828#01-A | Tank to Bowl Mounting Hardware - Cotton |
| | THU828#03-A | Tank to Bowl Mounting Hardware - Bone |
| | THU828#11-A | Tank to Bowl Mounting Hardware - Colonial White |
| | THU828#12-A | Tank to Bowl Mounting Hardware - Sedona Beige |
| | THU828#51-A | Tank to Bowl Mounting Hardware - Ebony |
| 11 | THU089 | Bolt Down Set |
| 12 | THU767 | Autoflush Unit |
| 13 | THU044S#XX | Bolt Cap Set - (1 Toilet) |
| 14 | THU098#XX | Bolt Cap Set - (10 Toilets) |

Note:

#XX denotes the following color code: #01, #03, #11, #12 & #51

Product Number Explanations

Two-Piece Toilet

(CST) Gravity Type Toilet
(MS) Toilet & Seat Combo
(MW) Toilet & WASHLET® Combo
(SS) Seat
(SW) WASHLET® (776) Model
(C) TORNADO FLUSH®
(E) 1.28 Gpf (G) CEFIONTECT®

Tank

(ST) Tank
(776) Model
(E) 1.28 Gpf
(A) AUTO FLUSH

Bowl

(C) Bowl
(776) Model
(C) TORNADO FLUSH®
(G) CEFIONTECT®
(T40) WASHLET®+

Actual Product may vary slightly from illustration.