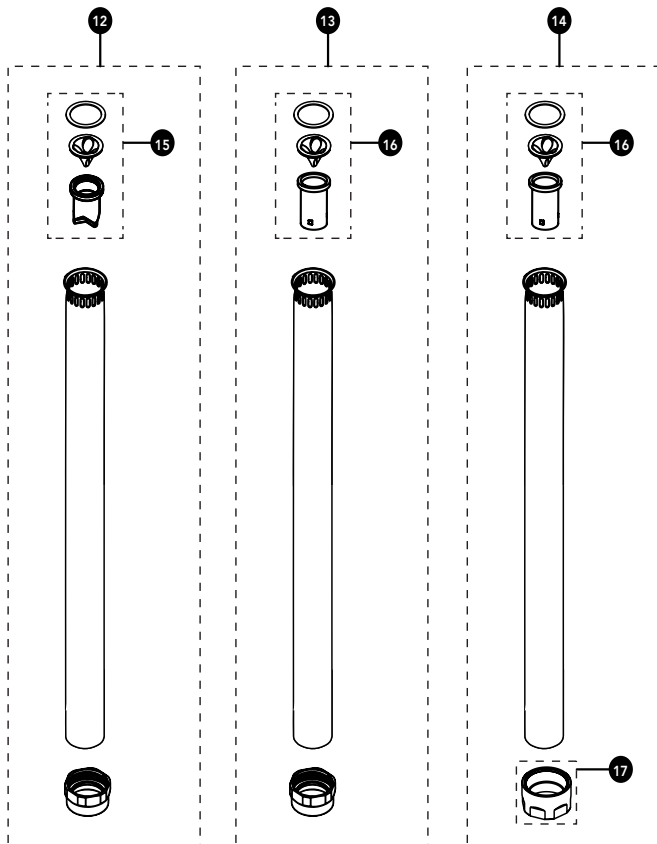
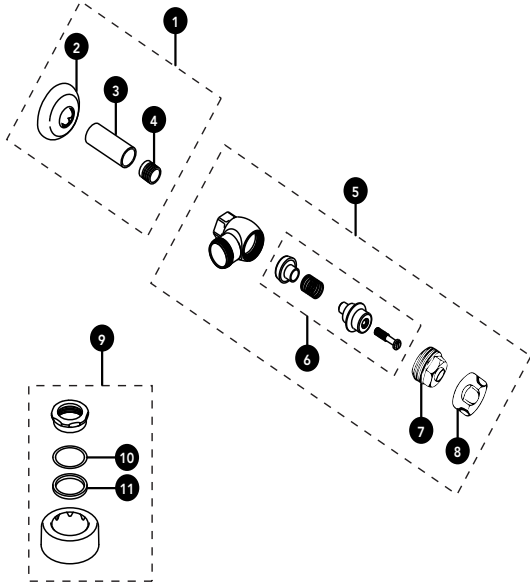


VBXX32#CP
 VBXX32X#CP

Vacuum Breaker & Angle Stop Set without VB Tube for Toilet w/ Exposed, Top Spud 1-1/2" Outlet

Note: VBXX32(X)#CP does not include the 24" Vacuum Breaker Tube (item #12, 13, or 14)



Not for "B" series (TET6UB, TET6LB, TET6GB)

For all TET6 models

Item	Part	Description
1	TH559EDVSJ3	Sweat Solder Kit 1"
	THP3320	Sweat Solder Kit 1" RW*
2	71051NT9	Wall Flange 1"
3	SC3	Sleeve Cover 1"
4	SJ3	Solder Adapter 1"
	THP3317	Solder Adapter 1" RW*
5	10077T3	Angle Stop (1") Toilet- Chrome Plated
	THP3312#CP	Angle Stop (1") Toilet- Chrome Plated RW*
6	10077T3-PM	Angle Stop Repair Kit (1")
	THP3308	Angle Stop Repair Kit (1") RW*
7	10077T3-QQ	Bonnet (1") - Not for RW
8	10077T3-XQ	Angle Stop Cap (1")
9	71051NT6	Spud Nut & Escutcheon 1-1/2"
10	R72115MZ	Friction Ring 1-1/2" (10/bag)
11	R81375MZ	Gaskets 1-1/2" (10/bag)
12	THP3291#CP	Vacuum Breaker (1-1/2" x 24") Chrome Finish
	THP3322#CP	Vacuum Breaker (1-1/2" x 24") Chrome Finish RW*
13	THP3291A#CP	Vacuum Breaker (1-1/2" x 24") Chrome Finish
	THP3322A#CP	Vacuum Breaker (1-1/2" x 24") Chrome Finish RW*
14	THP3291B#CP	Vacuum Breaker (1-1/2" x 24") Chrome Finish
	THP3322B#CP	Vacuum Breaker (1-1/2" x 24") Chrome Finish RW*
15	THP3292	Vacuum Breaker Repair Kit
16	THP3545	Vacuum Breaker Repair Kit (Skirted)
17	THP3563	Hex Nut

* RW = for Reclaimed Water. Includes VBXX32X#CP

Note: For Reclaimed Water (RW) applications use the RW version parts where applicable. Do not use standard vacuum breaker, standard control stop, or components with reclaimed water flush valve.