

FEATURES

- E-Max® flushing system
- Transitional style tank
- Close coupled, high performance toilet
- Round front bowl and tank set, seat sold separately
- Chrome trip lever
- 12" Rough-in, supply line sold separately

MODELS

- CST743EN
Round bowl, 12" rough-in, seat sold separately
- CST743ERN
Same as CST743EN with right hand trip lever (special order)

COMPONENTS

- C743E - Round Front Bowl
- ST744E - Tank and Cover only - Left-hand trip lever
- ST744ER - Tank and Cover only - Right-hand trip lever
- SS113 SoftClose® seat (sold separately)

COLORS/FINISHES

- #01 Cotton
- #03 Bone
- #11 Colonial White
- #12 Sedona Beige
- #51 Ebony

PRODUCT SPECIFICATION

The two-piece E-Max flushing system toilet shall be 1.28GPF/4.8LPF. Toilet shall have high-profile tank, round front bowl and chrome trip lever. Toilet shall be TOTO Model CST743EN____.



E+ E-Max

CODES/STANDARDS

- Meets and exceeds ASME A112.19.2/CSA B45.1
- Certifications: IAPMO(cUPC), EPA Watersense, State of Massachusetts, City of Los Angeles, and others
- Code compliance: UPC, IPC, NSPC, NPC Canada, and others
- Legislative compliance: California AB715, California Green Building Code, City of Los Angeles Water Efficiency Ordinance
- Complies with CA Prop 65 warning requirements



CST743E(R)N

Eco Drake® Transitional, 1.28GPF

SPECIFICATIONS

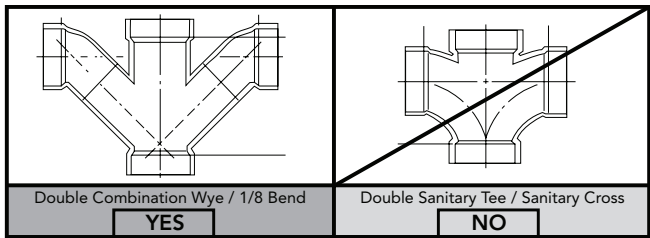
- Water Use 1.28 GPF/4.8LPF
- Flush System E-Max
- Min. Water Pressure 8 psi (static)
- Water Surface 10-1/4" x 8-1/2"
- Trap Diameter 2-1/8"
- Rough-in 12"
- Trap Seal 2-3/8"
- Warranty One Year Limited Warranty
- Material Vitreous china
- Shipping Weight C743E - 53lbs
ST744E(R) - 36lbs
- Shipping Dimensions C743E
27-3/4" L x 15" W1
x 10-1/4" W2 x 15-3/4" H

ST744E(R)
20-3/4" L x 9" W x 18-1/8" H

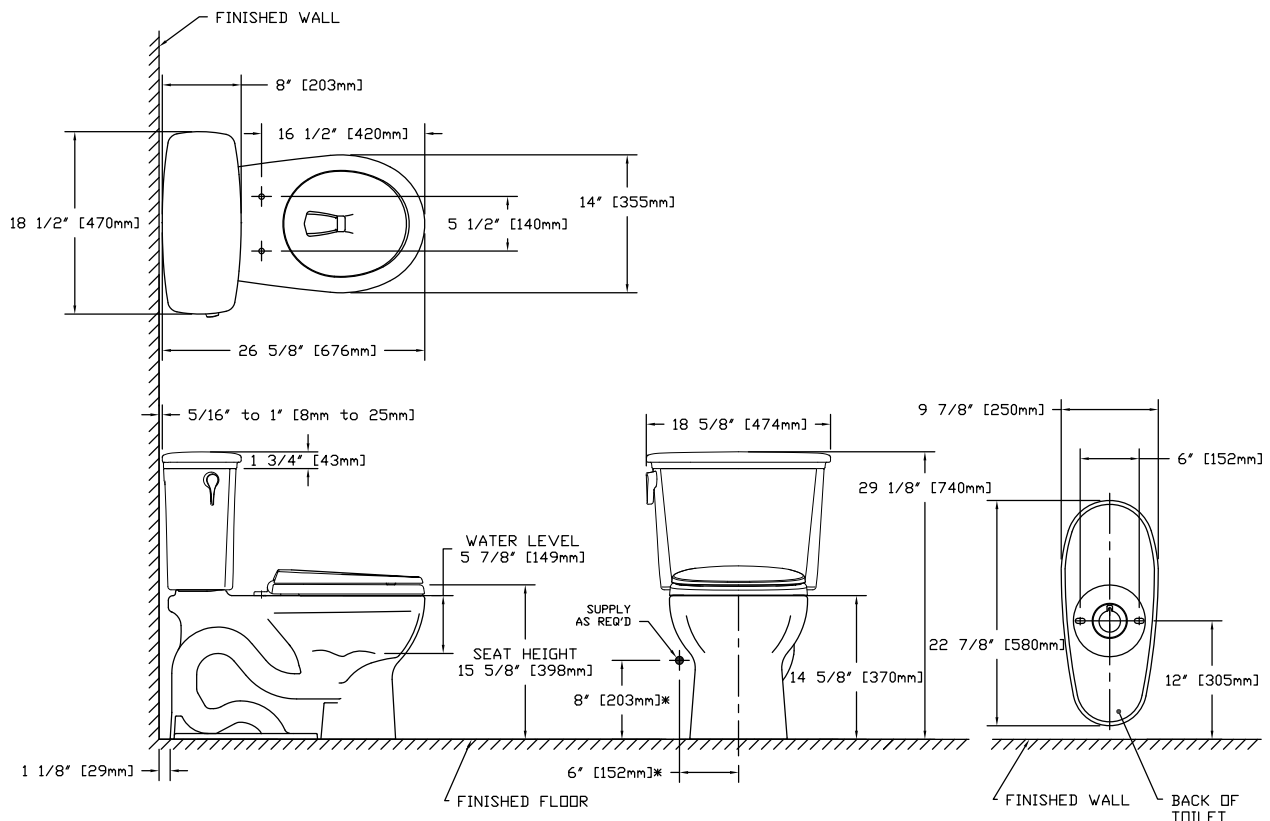
INSTALLATION NOTES

Back-to-Back Toilet Installations:

TOTO recommends the use of a nationally listed, double sanitary tee-wye only, in vertical waste stacks, in accordance with the stipulations noted in the majority of nationally recognized plumbing codes.



To maintain adequate wall gap between the back of the tank and wall, mount the floor flange at a nominal 12" rough-in distance.



*SUGGESTED DIMENSIONS

TOTO

These dimensions and specifications are subject to change without notice