

## FEATURES

- Solid brass construction
- Mounting hardware for both drywall & tile included

## PRODUCT SPECIFICATION

Product shall have solid brass construction and include installation hardware. Product shall be TOTO Model Y\_930\_\_\_\_.

## MODELS

- YB930 - Towel Bar
- YH930 - Robe Hook
- YP930 - Paper Holder
- YR930 - Towel Ring

## CODES/STANDARDS

- Complies with CA Prop 65 warning requirements

## COLORS/FINISHES

- #CP Polished Chrome
- #BN Brushed Nickel
- #PN Polished Nickel

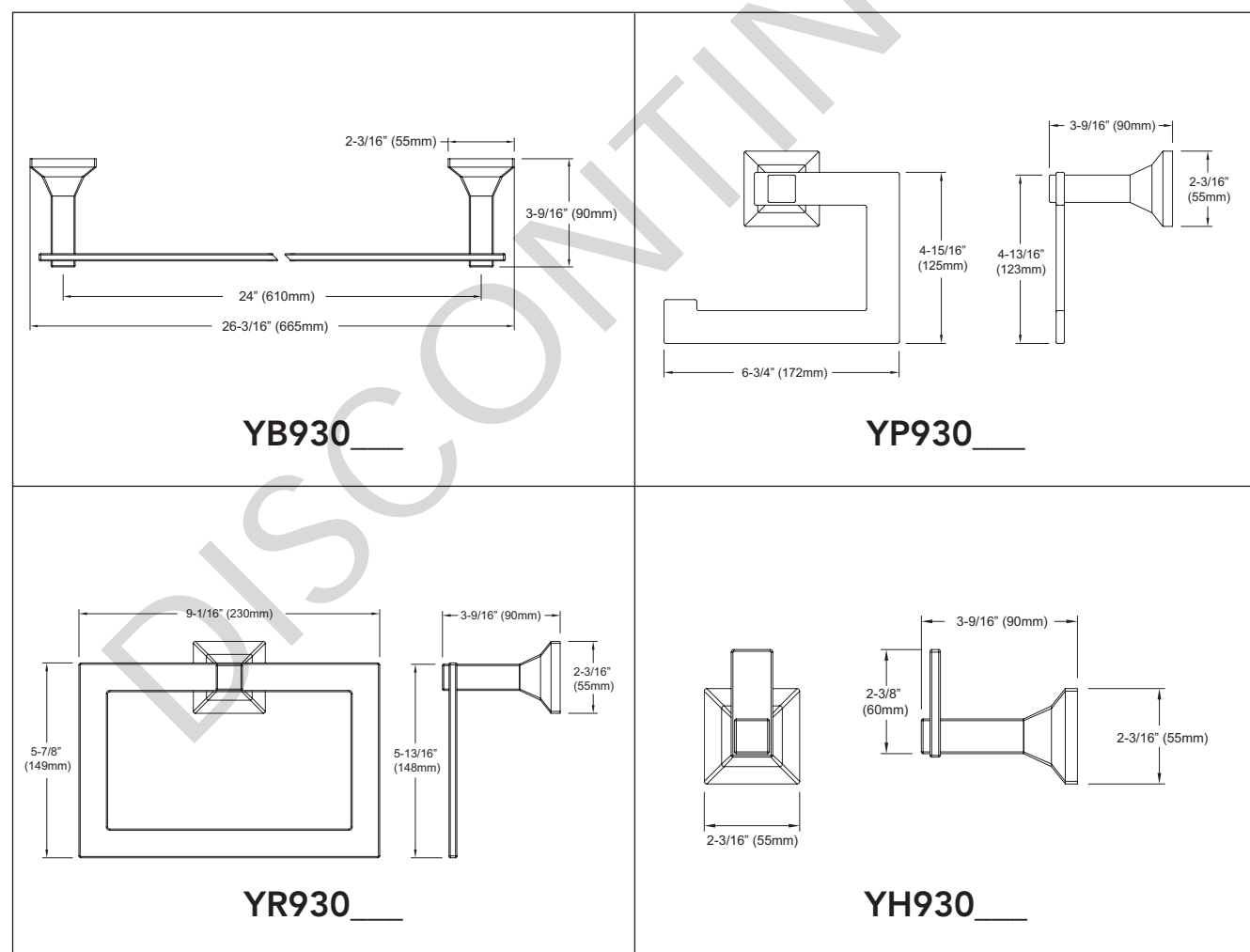
# Y\_930 Series

Lloyd® Bath Accessories

## SPECIFICATIONS

- Warranty: Lifetime Limited Warranty (Residential Use)  
One Year (Commercial Use)
- Material: Brass

Product Number	Shipping Weight	Shipping Dimensions
YB930	2.3 lbs.	30"L x 5-1/4"W x 3-1/8"D
YP930	1.1 lbs.	8-1/2"L x 7-1/2"W x 4-1/4"D
YR930	1.9 lbs.	10-3/4"L x 9-1/2"W x 4-1/8"D
YH930	0.5 lbs.	6-1/4"L x 5"W x 3"D



**TOTO**

These dimensions and specifications are subject to change without notice

Ph: (888) 295-8134 | Fax: (800) 699-4889 | [www.totousa.com](http://www.totousa.com)

#SS-00006, v.03  
Printed in U.S.A. | © TOTO USA 09/10 | Printed on recycled paper