

0.5GPF Low Consumption Washout Urinal

FEATURES

- Compact urinal with concealed integral trap
- Washout flush action with 3/4" top or back spud inlet
- 0.5 GPF with any flush valve shown below

MODELS

- UT447E
Urinal with 3/4" top spud inlet
- UT447EV
Urinal with 3/4" back spud inlet

ADDITIONAL ITEMS

- THU3017 (sold separately)
Stainless Steel Urinal Drain Cover

FLUSH VALVES			
EcoPower®		Manual	
*TEU1LA12#CP	0.5GPF	TMU1LN12#CP	0.5GPF
*TEU2LA11#SS	0.5GPF		
*TEU3LA11#SS	0.5GPF		

*WaterSense listed

COLORS/FINISHES

- Standard
#01 Cotton
#03 Bone
#12 Sedona Beige

PRODUCT SPECIFICATION

The wall-mounted, ADA compliant, low consumption washout urinal shall be 0.5GPF/1.9LPF when paired with a 0.5GPF flushometer valve and 1.0GPF/3.8LPF when paired with 1.0GPF/3.8LPF flushometer valve. Urinal specified shall be model UT447E_____.



CODES/STANDARDS

- Meets and exceeds ASME A112.19.2/CSA B45.1,
- Certifications: IAPMO(cUPC), State of Massachusetts
- Code compliance: UPC, IPC, NSPC, NPC Canada, and others
- ADA compliant



To complete a WaterSense listed combination, the urinal must be paired with a flush valve which is EPA WaterSense listed.

UT447E(V)

0.5GPF Low Consumption Washout Urinal

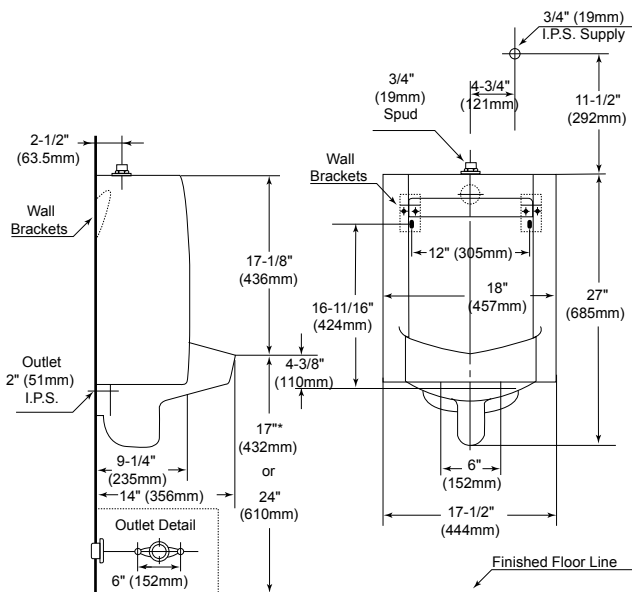
SPECIFICATIONS

- Water Use 0.5GPF/1.9LPF
- Flush System Washout flush action
- Warranty One Year Limited Warranty
- Material Vitreous china
- Min. Water Pressure 15 psi (flowing)
- Height (Urinal Only) 27-3/16"
- Width 18"
- Rim 14"
- Shipping Weight UT447E(V) - 60lbs
- Shipping Dimensions UT447E(V)
29-7/8" L x 16-3/4" W x 19-1/8" H

INSTALLATION NOTES

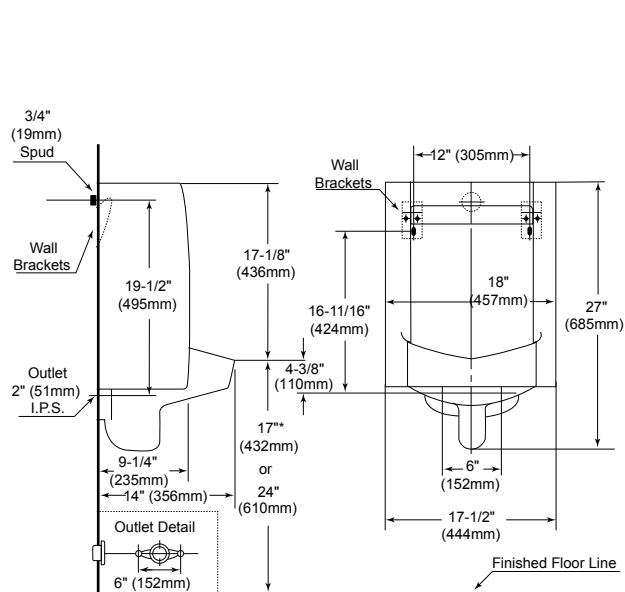
Adjust angle stop accordingly to prevent overflow.
Confirm with local codes and standards for floor drain requirement.

UT447E



*For ADA installation refer to local codes

UT447EV



*For ADA installation refer to local codes

TOTO

These dimensions and specifications are subject to change without notice