

## Drake® Close Coupled Toilet, 1.6GPF

### FEATURES

- G-Max® flushing system
- Close coupled, high performance toilet
- Round front bowl and tank set, seat sold separately
- Chrome trip lever
- 12" Rough-in, supply line sold separately

### MODELS

- CST743S  
Round bowl, 12" rough-in, less seat
- CST743SB\*  
Same as CST743S with bolt down lid (special order)
- CST743SD\*  
Same as CST743S with insulated tank (special order)
- CST743SDB\*  
Same as CST743S with bolt down lid & insulated tank (special order)
- CST743SR\*  
Same as CST743S with right hand trip lever (special order)

### COMPONENTS

- C743E - Round Front Bowl
- ST743S - Tank and Cover only - Left-hand trip lever
- ST743SB - Tank and Cover only - Bolt down lid
- ST743SD - Tank and Cover only - Insulated tank
- ST743SDB - Tank and Cover only - Bolt down lid and insulated tank
- ST743SR - Tank and Cover only - Right-hand trip lever
- ST743SRB - Tank and Cover only - Bolt down lid with right-hand trip lever
- SS113 SoftClose® seat (sold separately)

### COLORS/FINISHES

- Standard  
#01 Cotton  
#03 Bone  
#11 Colonial White  
#12 Sedona Beige  
#51 Ebony



### PRODUCT SPECIFICATION

The two-piece G-Max flushing system toilet shall be 1.6GPF/6.0LPF. Toilet shall have high-profile tank, round front bowl and chrome trip lever. Toilet shall be TOTO Model CST743S\_\_\_\_\_.

### CODES/STANDARDS

- Meets and exceeds ASME A112.19.2/CSA B45.1
- Certifications: IAPMO(cUPC), State of Massachusetts, City of Los Angeles, and others
- Code compliance: UPC, IPC, NSPC, NPC Canada, and others



# CST743S

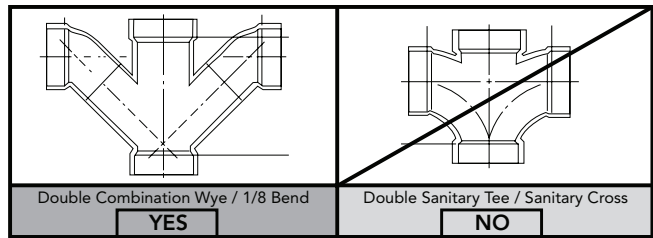
## Drake® Close Coupled Toilet, 1.6GPF

### SPECIFICATIONS

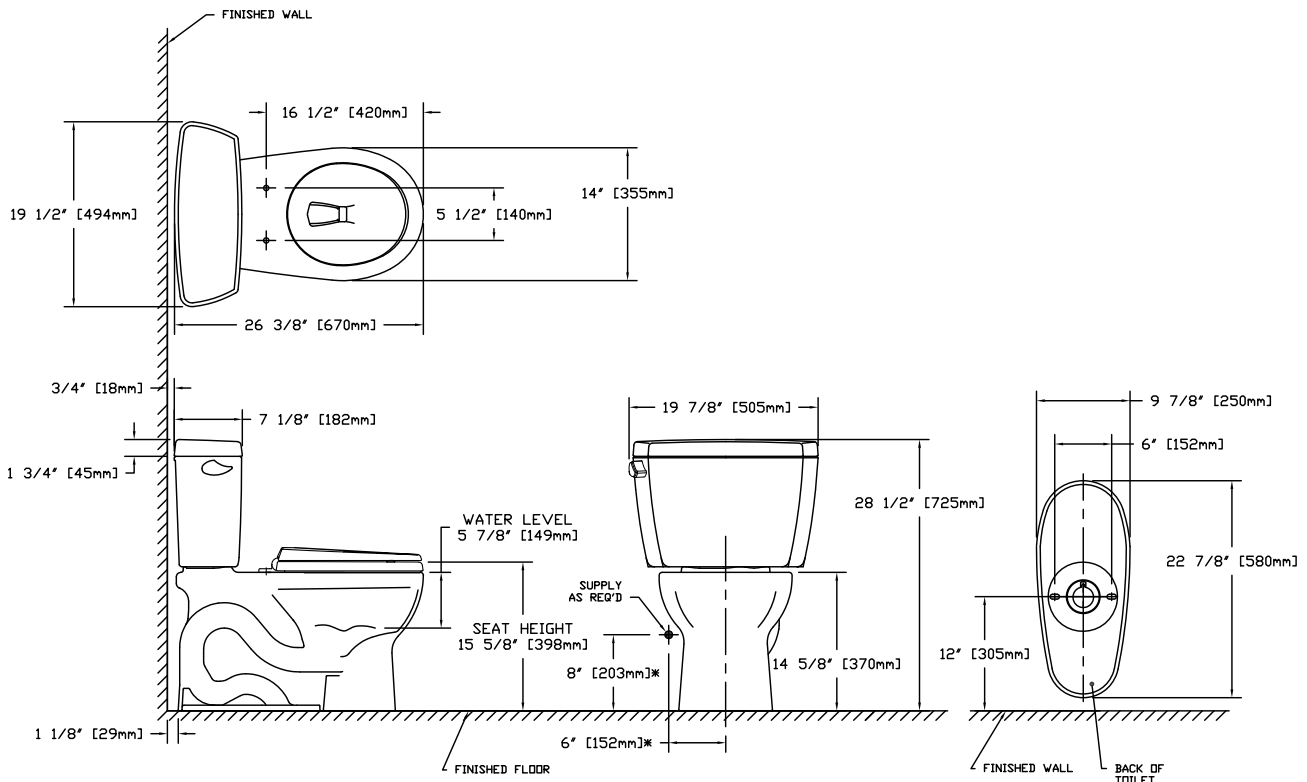
- Water Use 1.6 GPF/6.0LPF
- Flush System G-Max®
- Min. Water Pressure 8 psi (static)
- Water Surface 10-1/4" x 8-1/2"
- Trap Diameter 2-1/8"
- Rough-in 12"
- Trap Seal 2-3/8"
- Warranty One Year Limited Warranty
- Material Vitreous china
- Shipping Weight C743E - 53lbs  
ST743S - 35lbs
- Shipping Dimensions C743E  
27-3/4" L x 15" W1  
x 10-1/4" W2 x 15-3/4" H  
  
ST743S  
20-1/8" L x 8-1/4" W  
x 15-1/2" H

### INSTALLATION NOTES

Back-to-Back Toilet Installations:  
TOTO recommends the use of a nationally listed, double sanitary tee-wye only, in vertical waste stacks, in accordance with the stipulations noted in the majority of nationally recognized plumbing codes.



To maintain adequate wall gap between the back of the tank and wall, mount the floor flange at a nominal 12" rough-in distance.



\*SUGGESTED DIMENSIONS

**TOTO®**

*These dimensions and specifications are subject to change without notice*