

TOTO®

CST454CUF(R)(G)

Drake® II 1G® Two-Piece Toilet, 1.0GPF

FEATURES

- TORNADO FLUSH® system, ultra high-efficiency (1.0GPF/3.8LPF)
- CEFIONTECT® ceramic glaze minimizes waste from sticking to porous ceramic surfaces
- Universal Height
- Decorative two-piece design with high-profile tank
- Elongated front bowl and tank set, less seat
- Chrome trip lever
- 12" Rough-in, supply line sold separately

MODELS

- CST454CUFG
With CEFIONTECT ceramic glaze (#01, #03, #11, #12)
- CST454CUF
Same as above less CEFIONTECT (#51 Only)
- CST454CUFRG
With right-hand trip lever, CEFIONTECT ceramic glaze

COMPONENTS

- C454CUFG Elongated bowl with CEFIONTECT
- ST453UA Tank and cover only
- ST453UR Tank and cover only, right-hand trip lever

- SS224 SoftClose® seat (sold separately)
- SS214 SoftClose® seat (sold separately)
- SS204 SoftClose® seat (sold separately)
- SS114 SoftClose® seat (sold separately)
- SC534 Commercial seat (sold separately)

OPTIONAL COMPONENTS

- **THU485(#01, #BN, #PN, #MBL)**
Left Hand Trip Lever - Cotton, Brushed Nickel, Polished Nickel, Matte Black

COLORS/FINISHES

- #01 Cotton
- #03 Bone
- #11 Colonial White
- #12 Sedona Beige
- #51 Ebony

PRODUCT SPECIFICATION

The two-piece ultra-high-efficiency Tornado Flush system toilet shall be 1.0GPF/3.8LPF. Toilet shall have CEFIONTECT ceramic glaze and be at Universal Height. Toilet shall have high-profile tank, elongated front bowl and Chrome trip lever. Toilet shall be TOTO Model CST454CUF_____.



 Tornado Flush  UNIVERSAL HEIGHT

 CEFIONTECT

CODES/STANDARDS

- Meets and exceeds ASME A112.19.2/CSA B45.1
- Certifications: IAPMO(cUPC), EPA Watersense, State of Massachusetts, City of Los Angeles, and others
- Code compliance: UPC, IPC, NSPC, NPC Canada, and others
- Legislative Compliance: California AB715, CALGreen Title 24, City of Los Angeles Water Efficiency Ordinance, California Energy Commission Standards
- BAA Buy American Act Compliant
- ADA compliant (when installed with trip lever located on the approach side)
- Complies with CA Prop 65 warning requirements



CALGreen

CST454CUF(R)(G)

Drake® II 1G® Two-Piece Toilet, 1.0GPF

SPECIFICATIONS

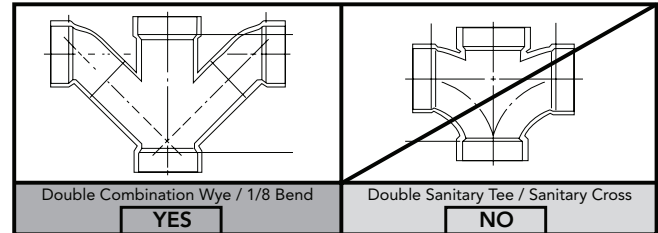
- Water Use 1.0 GPF/3.8LPF
- Flush System TORNADO FLUSH®
- Min. Water Pressure 8 psi (static)
- Water Surface 6-3/4" x 8-5/8"
- Trap Diameter 2-1/8"
- Rough-in 12"
- Trap Seal 2-1/8"
- Warranty One Year Limited Warranty
- Material Vitreous china
- Shipping Weight C454CUF(G) 57.3lbs.
ST453U(R) 28lbs.
- Shipping Dimensions C454CUF(G)
29" L X 14-3/4" W1 X
11-1/2" W2 X 16-1/4" H

ST453U(R)
18" L X 9-1/2" W X 16-1/2" H

INSTALLATION NOTES

Back-to-Back Toilet Installations:

TOTO recommends the use of a nationally listed, double sanitary tee-wye only, in vertical waste stacks, in accordance with the stipulations noted in the majority of nationally recognized plumbing codes.



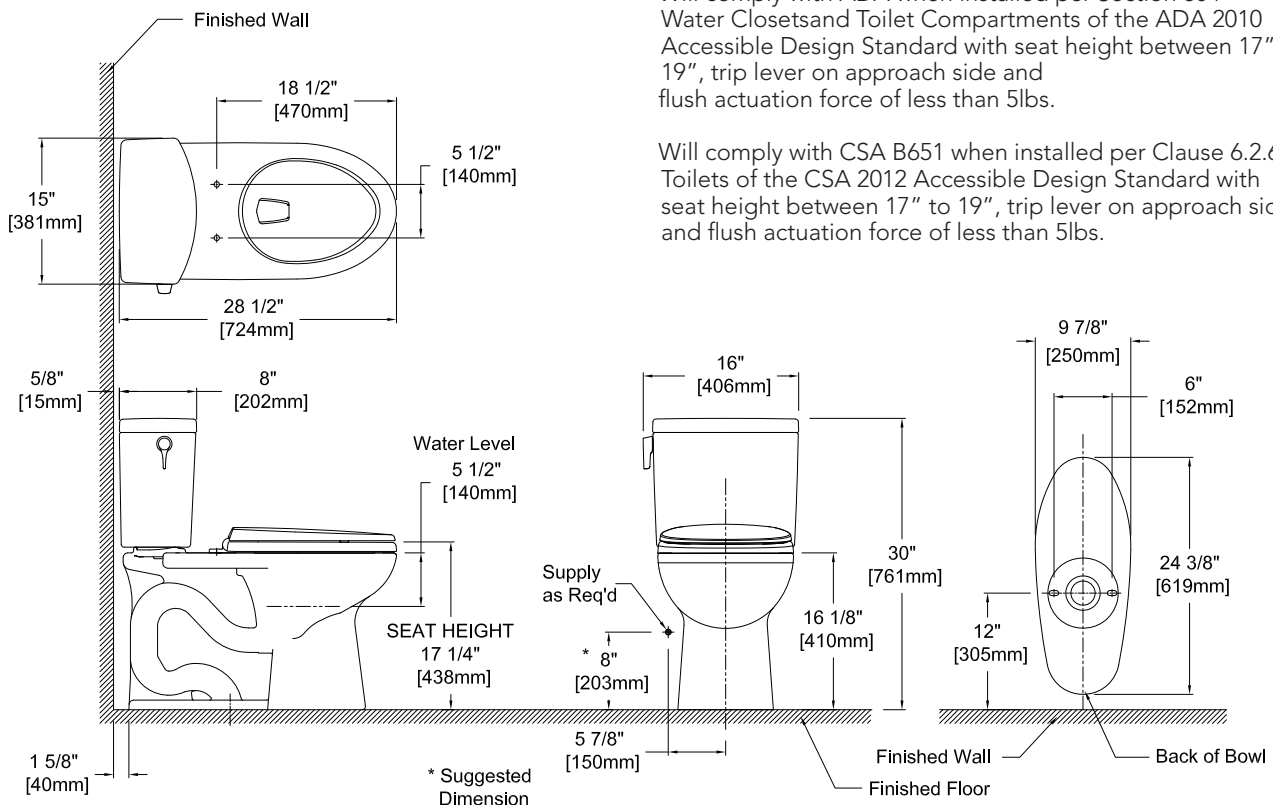
Install this product according to the installation guide.

To maintain adequate wall gap between the back of the tank and wall, mount the floor flange at a nominal 12" rough-in distance.

Ultra-low high efficiency toilets require a system with adequate supplemental flows from other water usage fixtures and a 4" ID drainline with minimum 2% slope and maximum linear runs of 60ft.

Will comply with ADA when installed per Section 604 Water Closets and Toilet Compartments of the ADA 2010 Accessible Design Standard with seat height between 17" to 19", trip lever on approach side and flush actuation force of less than 5lbs.

Will comply with CSA B651 when installed per Clause 6.2.6 Toilets of the CSA 2012 Accessible Design Standard with seat height between 17" to 19", trip lever on approach side and flush actuation force of less than 5lbs.



TOTO

These dimensions and specifications are subject to change without notice