

FEATURES

- E-Max® flushing system
- Optional CEFIONTECT® ceramic glaze - CEFIONTECT glaze prevents debris, and mold from sticking to ceramic surfaces, leading to fewer chemicals.
- Close coupled commercial grade, high performance toilet
- Elongated front bowl and tank set, less seat
- Transitional Design
- Chrome trip lever
- 12" Rough-in, supply line sold separately

MODELS

- CST744EGN
with CEFIONTECT (#01 only)
- CST744EN
Same as above less CEFIONTECT (#01,#03, #11, #12 #51)
- CST744ERGN
with CEFIONTECT (#01 only), right-hand trip lever
- CST744ERN
Same as above less CEFIONTECT (#01,#03, #11, #12 #51), right-hand trip lever

COMPONENTS

- C744EG - Elongated Front Bowl with CEFIONTECT
- C744E - Elongated Front Bowl less CEFIONTECT
- ST744E - Tank and Cover only - Left-hand trip lever
- ST744ER - Tank and Cover only - Right-hand trip lever
- SS114 SoftClose® seat (sold separately)
- SC134 Commercial seat (sold separately)
- SC534 Commercial seat (sold separately)

COLORS/FINISHES

- #01 Cotton
- #03 Bone
- #11 Colonial White
- #12 Sedona Beige
- #51 Ebony

PRODUCT SPECIFICATION

The two-piece E-Max flushing system toilet shall be 1.28GPF/4.8LPF. Toilet shall have high-profile tank, elongated front bowl and chrome trip lever. Toilet shall be TOTO Model CST744EN_____.



E+ E-Max

CEFIONTECT

CODES/STANDARDS

- Meets and exceeds ASME A112.19.2/CSA B45.1
- Certifications: IAPMO(cUPC), EPA Watersense, State of Massachusetts, City of Los Angeles, and others
- Code compliance: UPC, IPC, NSPC, NPC Canada, and others
- Legislative compliance: California AB715, California Green Building Code, City of Los Angeles Water Efficiency Ordinance
- Complies with CA Prop 65 warning requirements



CST744E(R)(G)N

Eco Drake® Transitional, 1.28GPF

SPECIFICATIONS

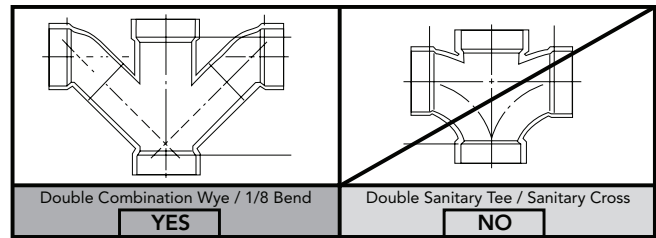
- Water Use 1.28 GPF/4.8LPF
- Flush System E-Max®
- Min. Water Pressure 8 psi (static)
- Water Surface 10-1/4" x 8-1/2"
- Trap Diameter 2-1/8"
- Rough-in 12"
- Trap Seal 2-3/8"
- Warranty One Year Limited Warranty
- Material Vitreous china
- Shipping Weight C744E(G) - 52lbs
ST744E(R) - 36lbs
- Shipping Dimensions C744E(G)
29-1/2" L x 16" W1
x 10-1/4" W2 x 18-1/4" H

ST744E(R)
20-3/4" L x 9" W x 18-1/8" H

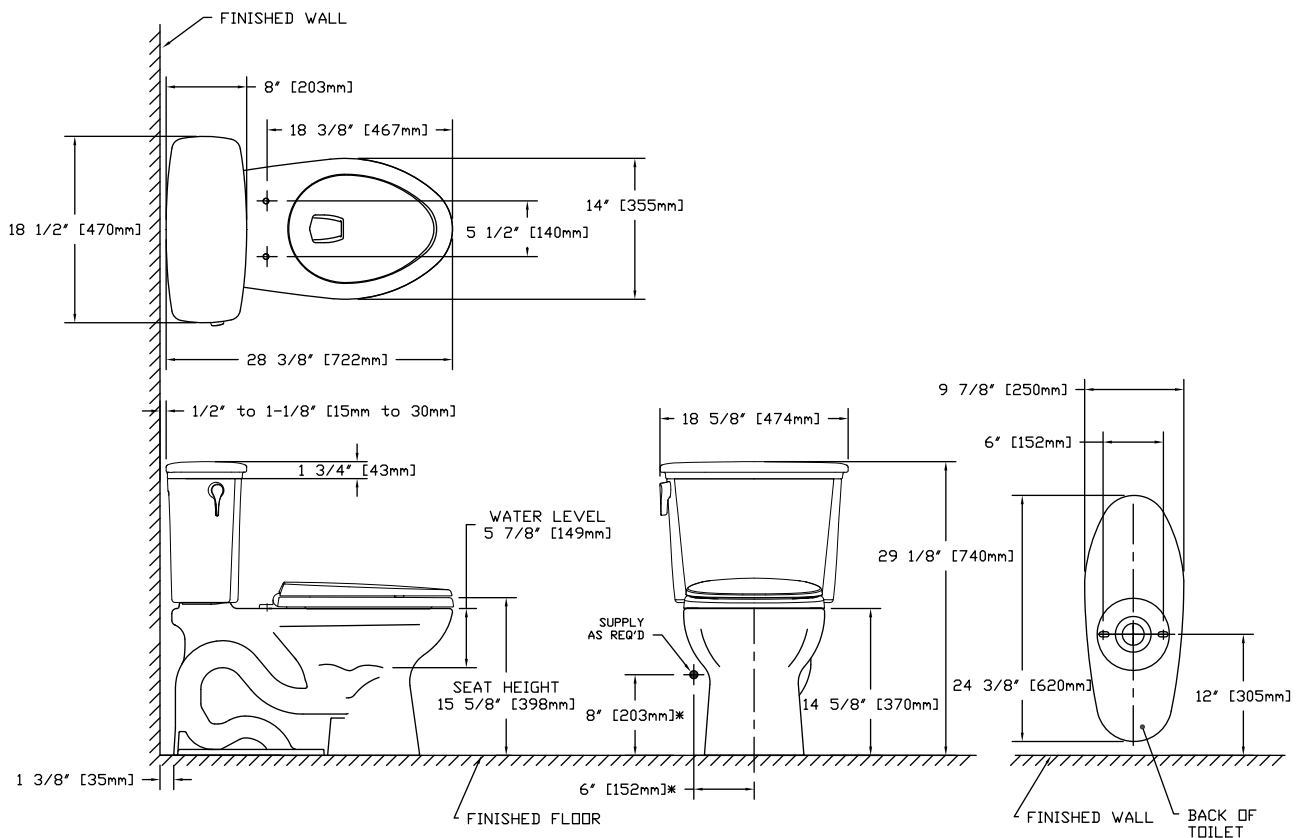
INSTALLATION NOTES

Back-to-Back Toilet Installations:

TOTO recommends the use of a nationally listed, double sanitary tee-wye only, in vertical waste stacks, in accordance with the stipulations noted in the majority of nationally recognized plumbing codes.



To maintain adequate wall gap between the back of the tank and wall, mount the floor flange at a nominal 12" rough-in distance.



*SUGGESTED DIMENSIONS

TOTO

These dimensions and specifications are subject to change without notice