

TOTO®

CST746CEMF(R)G.10

Drake® Close Coupled Toilet, 1.28 & 0.8 GPF, 10" Rough-In

FEATURES

- DYNAMAX TORNADO FLUSH® utilizes 360° cleaning power to reach every part of the bowl
- High-efficiency dual flush 1.28 & 0.8 GPF (4.8 & 3.0 LPF)
- CEFIONTECT® ceramic glaze prevents debris and mold from sticking to ceramic surfaces
- Design of the bowl reduces water flow resistance resulting in a quieter flushing sound
- Elongated front bowl, less seat
- Universal Height
- Chrome plated trip lever
- 10" Rough-in
- Semi-concealed trapway

MODELS

- **CST746CEMFG.10 (#01)**
With CEFIONTECT ceramic glaze without seat
- **CST746CEMFRG.10 (#01)**
Same as CST746CEMFG.10 except right hand trip lever

COMPONENTS

- **CT746CUFG.10**
Elongated bowl with CEFIONTECT
- **ST746EMA**
Tank and cover only
- **ST746EMR (#01)**
Tank and cover only with right-hand trip lever

OPTIONAL COMPONENTS

- **ST746EMB (#01)**
Insulated Tank
- **ST746EMD (#01)**
Bolt Down Tank
- **ST746EMDB (#01)**
Insulated Bolt Down Tank
- **THU773(#01, #BN, #PN)-A**
Trip Lever - Cotton, Brushed Nickel, Polished Nickel
- **THU774(#01, #BN, #PN, #CP)-A**
Right Hand Trip Lever - Cotton, Brushed Nickel, Polished Nickel, Polished Chrome

COLORS/FINISHES

- #01 Cotton



-  **DYNAMAX TORNADO FLUSH**
-  **Universal Height**
-  **CEFIONTECT**

PRODUCT SPECIFICATION

The two-piece high-efficiency DYNAMAX TORNADO FLUSH toilet shall be dual flush 1.28 GPF/0.8 GPF. Toilet shall be 10" rough-in. Toilet shall have optional CEFIONTECT ceramic glaze and be at Universal Height. Toilet shall have elongated front bowl and chrome plated trip lever. Toilet shall be TOTO Model CST746CEMF_____.

CODES/STANDARDS

- Meets and exceeds ASME A112.19.2/CSA B45.1, ASME A112.19.14
- Certifications: IAPMO(cUPC®), EPA WaterSense, State of Massachusetts, and others
- Code Compliance: UPC, IPC, NSPC, NPC Canada, and others
- Legislative Compliance: California Green Building Code, City of Los Angeles Water Efficiency Ordinance, and others
- ADA compliant (when installed with trip lever located on the approach side)
- Complies with CA Prop 65 warning requirements



CST746CEMF(R)G.10

Drake® Close Coupled Toilet, 1.28 & 0.8 GPF, 10" Rough-In

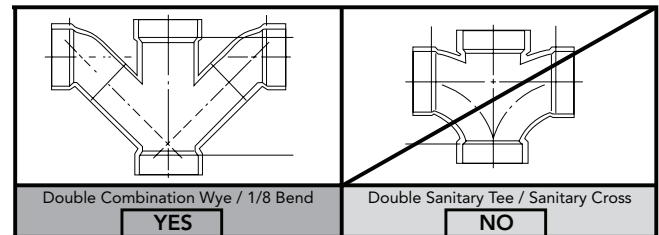
SPECIFICATIONS

Water Use	1.28 & 0.8 GPF (4.8 & 3.0 LPF)
Flush System	DYNAMAX TORNADO FLUSH®
Min. Water Pressure	8 psi (Flowing)
Water Surface	5-5/8" x 4-1/8"
Trap Diameter	2-1/2"
Rough-in	10"
Trap Seal	2-1/8"
Warranty	One Year Limited Warranty
Material	Vitreous China
Shipping Weight	CT746CUFG.10 64 lbs. ST746EMA 35 lbs.
Shipping Dimensions	CT746CUFG.10 18-3/4" L x 10-1/2" W x 18-1/8" H ST746EMA 18-3/4" L x 8-3/8" W x 16" H

INSTALLATION NOTES

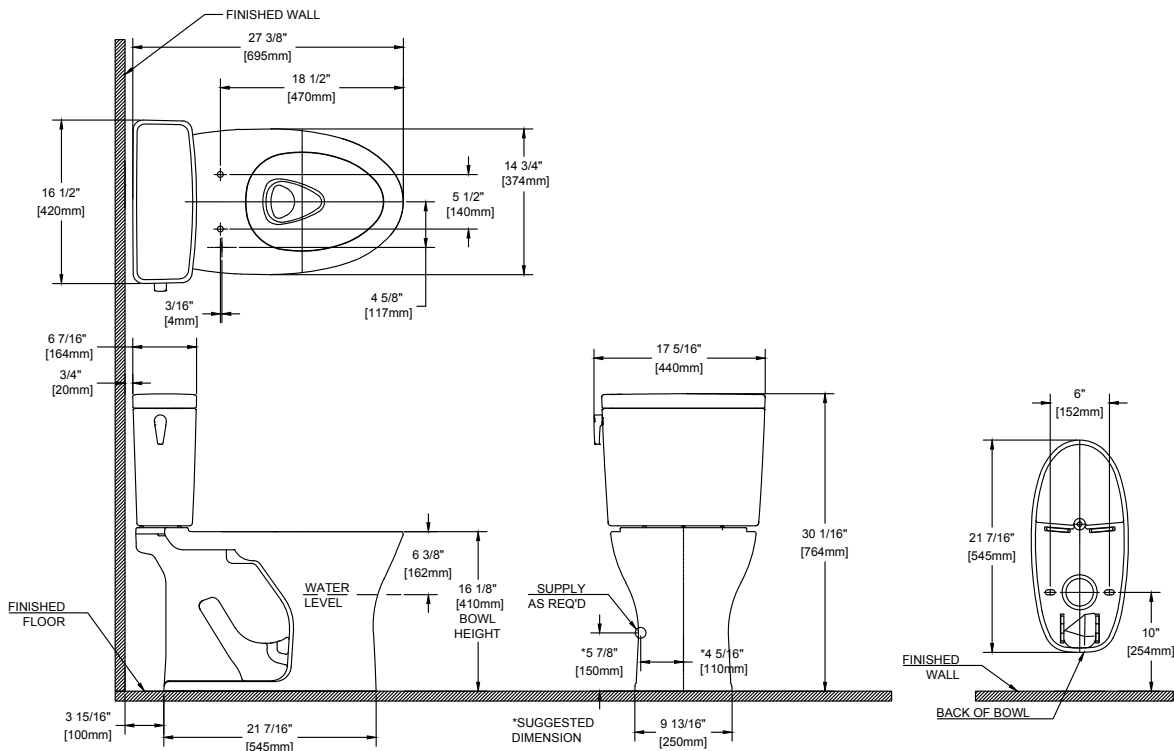
Back-to-Back Toilet Installations:

TOTO recommends the use of a nationally listed, double sanitary tee-wye only, in vertical waste stacks, in accordance with the stipulations noted in the majority of nationally recognized plumbing codes.



To maintain adequate wall gap between the back of the tank and wall, mount the floor flange at a nominal 10" rough-in distance.

DIMENSIONS



TOTO®

These dimensions and specifications are subject to change without notice