

IoT-Enabled Touchless Soap Dispenser - Square

FEATURES

- Wireless Communication
- Connects seamlessly with Georgia-Pacific's (GP) KOLO™ Smart Monitoring System and through an API to facilities monitoring platforms
- Service agreement with GP required to enable IoT or Smart Features
- Touchless soap dispenser's operation is independent of its IoT capability
- Some of the IoT-enabled Smart Features include: failure detection, usage and soap consumption.
- Additional product benefits and features are available by contacting TOTO IoT/Smart Products Experts (or Division) or a TOTO sales representative
- Sensor operated foaming soap dispenser
- Self-adjusting sensor spout with base unit, mounting hardware and supply lines
- Chrome plated
- Single-hole mount
- TOTO Soap required
- Refillable tank system
- ADA compliant



Auto Functions

COLORS/FINISHES

- #CP Polished Chrome

OPTIONAL ACCESSORIES

- THP3374
Mounting bracket for tank

MODELS

- TES201AEi2#CP (1 Spout)**
 - TLK08001G#CP (Spout x 1 pc)
 - TLK01101Ui2 (Controller for 1 Spout & Reservoir)
- TES202AEi2#CP (2 Spouts)**
 - TLK08001G#CP (Spout x 2 pcs)
 - TLK01102Ui2 (Controller for 2 Spouts & Reservoir)
- TES203AEi2#CP (3 Spouts)**
 - TLK08001G#CP (Spout x 3 pcs)
 - TLK01103Ui2 (Controller for 3 Spouts & Reservoir)

PRODUCT SPECIFICATION

TOTO Model # _____ Product shall be automatic infrared sensor activated. Product shall have automatic sensor adjustment upon installation. Soap dispenser and controller w/ reservoir will be sold separately. Product shall have a controller pump with 0.8 gallon (3L) reservoir.

CODES/STANDARDS

- Meets and exceeds UL1951, CSA C22.2 #68
- Certifications: UL
- Code Compliance: NEC, CEC
- ADA Compliant
- Compliance with CA Prop 65 warning requirements
- FCC compliant to Part 15



COMPONENT BREAKDOWN

Soap Dispenser Specification Details

Step 1: Choose quantity of spouts desired

Step 2: Select kit or by individual component quantities

KIT OPTIONS		COMPONENTS			
Kit Model #	Spout Installation	SPOUT		CONTROLLER & RESERVOIR	
		Model #	Spout Qty	Model #	Component Qty
TES201AEi2#CP	1	TLK08001G#CP	1	TLK01101Ui2	1 (For 1 Spout)
TES202AEi2#CP	2	TLK08001G#CP	2	TLK01102Ui2	1 (For 2 Spouts)
TES203AEi2#CP	3	TLK08001G#CP	3	TLK01103Ui2	1 (For 3 Spouts)

TES20(1/2/3)AEi2 Series

IoT-Enabled Touchless Soap Dispenser - Square

SPECIFICATIONS

Power Supply	AC 120V
Wattage	(TLK01101Ui2) 4W (TLK01102Ui2) 6.5W (TLK01103Ui2) 9W
Sensor Detection Range	5-1/8" ~ 7-7/8" (130 ~ 200 mm) Sensor is self-adjusting
Ambient Temperature	34-104°F (1-40°C)
Humidity	Max. 90% RH
Power Cord Length	55" (1.4 m)
Soap Output Volume	0.04 oz (factory setting)
Tank Capacity	Approximately 0.8 gallon (3L)
Warranty	*Three Year Warranty

* Failure to use TOTO soap will void warranty

INSTALLATION NOTES

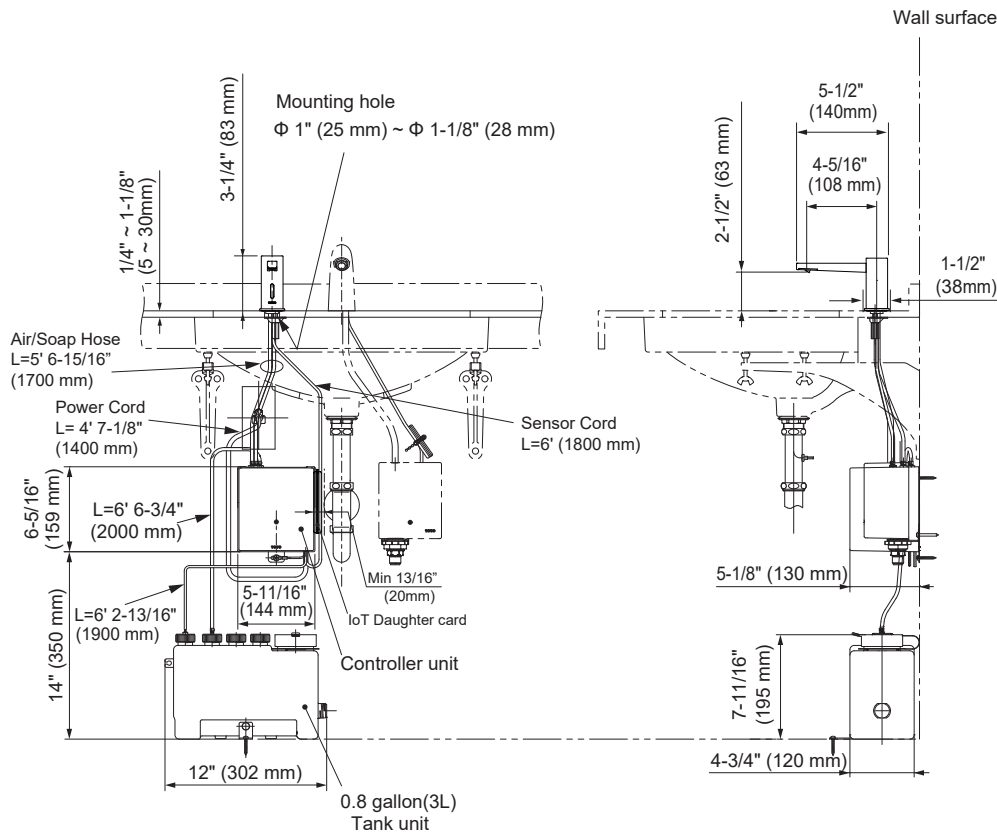
- Spout Mounting Hole $\varnothing 1"$ ~ $\varnothing 1\text{-}1/8"$ ($\varnothing 25$ ~ $\varnothing 28$ mm)
- Deck Thickness $1/4"$ ~ $1\text{-}1/8"$ (5 ~ 30 mm)
- A minimum of $13/16"$ (20mm) clearance on the right side of the controller is required for IoT daughter card installation. Please refer to the diagram below.

TOTO SOAP *(Sold Separately)*

SKU No.	Quantity	Packaging	Notes
TSGF1	4 gal.	Package of 4, 1 gal. each	Antimicrobial Soap (Fresh)
TSFB1-GS	4 gal.	Package of 4, 1 gal. each	TOTO Foam Soap Green Seal™ (Lilac)



DIMENSIONS



TOTO®

These dimensions and specifications are subject to change without notice