

IoT-Enabled Touchless Soap Dispenser - Square Vessel

FEATURES

- Wireless Communication
- Connects seamlessly with Smart Monitoring System and through an API to facilities monitoring platforms
- Service agreement is required to enable IoT or Smart Features
- Touchless soap dispenser's operation is independent of its IoT capability
- Some of the IoT-enabled Smart Features include: failure detection, usage and soap consumption.
- Sensor operated foaming soap dispenser
- Self-adjusting sensor spout with base unit, mounting hardware and supply lines
- Chrome plated
- Single-hole mount
- TOTO Soap required
- Refillable tank system

COLORS/FINISHES

- #CP Polished Chrome

MODELS

- TES201AGi2#CP (1 Spout)**
TLK08003G#CP (Spout x 1 pc)
TLK01101UiA (Controller for 1 Spout & Reservoir)
THP3395 (IoT Communication Card)
- TES202AGi2#CP (2 Spouts)**
TLK08003G#CP (Spout x 2 pcs)
TLK01102UiA (Controller for 2 Spouts & Reservoir)
THP3395 (IoT Communication Card)
- TES203AGi2#CP (3 Spouts)**
TLK08003G#CP (Spout x 3 pcs)
TLK01103UiA (Controller for 3 Spouts & Reservoir)
THP3395 (IoT Communication Card)
- TES201AGi4#CP (1 Spout)**
TLK08003G#CP (Spout x 1 pc)
TLK01101UiA (Controller for 1 Spout & Reservoir)
THP3566 (IoT Communication Card)
- TES202AGi4#CP (2 Spouts)**
TLK08003G#CP (Spout x 2 pcs)
TLK01102UiA (Controller for 2 Spouts & Reservoir)
THP3566 (IoT Communication Card)
- TES203AGi4#CP (3 Spouts)**
TLK08003G#CP (Spout x 3 pcs)
TLK01103UiA (Controller for 3 Spouts & Reservoir)
THP3566 (IoT Communication Card)

COMPONENT BREAKDOWN

Soap Dispenser Specification Details

Step 1: Choose quantity of spouts desired

Step 2: Select kit or by individual component quantities

KIT OPTIONS	COMPONENTS						
	Kit Model#	Spout Model#	QTY	Controller & Reservoir Model#	QTY	IoT Card Model#	QTY
TES201AGi2#CP	---	TLK08003G#CP	1	TLK01101UiA	1	THP3395	1
TES202AGi2#CP	---	TLK08003G#CP	2	TLK01102UiA	1	THP3395	1
TES203AGi2#CP	---	TLK08003G#CP	3	TLK01103UiA	1	THP3395	1
TES201AGi4#CP	---	TLK08003G#CP	1	TLK01101UiA	1	THP3566	1
TES202AGi4#CP	---	TLK08003G#CP	2	TLK01102UiA	1	THP3566	1
TES203AGi4#CP	---	TLK08003G#CP	3	TLK01103UiA	1	THP3566	1



Auto Functions

PRODUCT SPECIFICATION

TOTO Model # _____ Product shall be automatic infrared sensor activated. Product shall have automatic sensor adjustment upon installation. Soap dispenser and controller w/ reservoir will be sold separately. Product shall have a controller pump with 0.8 gallon (3L) reservoir.

OPTIONAL ACCESSORIES

- THP3374
Mounting bracket for tank

CODES/STANDARDS

- Meets and exceeds UL1951, CSA C22.2 #68
- Certifications: UL
- Code Compliance: NEC, CEC
- ADA Compliant
- Compliance with CA Prop 65 warning requirements
- FCC compliant to Part 15



TES20(1/2/3)AGi Series

IoT-Enabled Touchless Soap Dispenser - Square Vessel

SPECIFICATIONS

Power Supply	AC 120V
Wattage	(TLK01101UiA) 4W (TLK01102UiA) 6.5W (TLK01103UiA) 9W
Sensor Detection Range	5-1/8" ~ 7-7/8" (130 ~ 200 mm) Sensor is self-adjusting
Ambient Temperature	34-104°F (1-40°C)
Humidity	Max. 90% RH
Power Cord Length	55" (1.4 m)
Soap Output Volume	0.04 oz (factory setting)
Tank Capacity	Approximately 0.8 gallon (3L)
Warranty	*Three Year Warranty

* Failure to use TOTO soap will void warranty

INSTALLATION NOTES

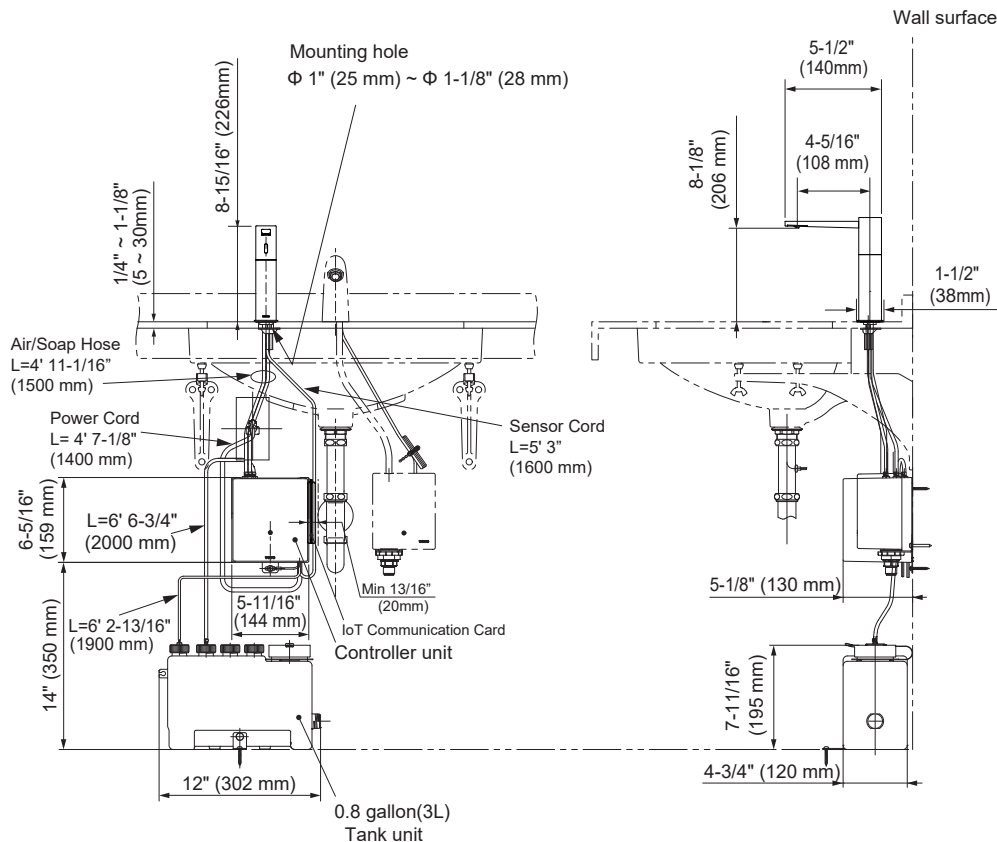
- Spout Mounting Hole $\phi 1" \sim \phi 1\text{-}1/8"$ ($\phi 25 \sim \phi 28$ mm)
- Deck Thickness $1/4" \sim 1\text{-}1/8"$ (5 ~ 30 mm)
- A minimum of $13/16"$ (20mm) clearance on the right side of the controller is required for IoT communication card installation. Please refer to the diagram below.

TOTO SOAP *(Sold Separately)*

SKU No.	Quantity	Packaging	Notes
TSFG1	4 gal.	Package of 4, 1 gal. each	Antimicrobial Soap (Fresh)
TSFB1-GS	4 gal.	Package of 4, 1 gal. each	TOTO Foam Soap Green Seal™ (Lilac)



DIMENSIONS



TOTO®

These dimensions and specifications are subject to change without notice